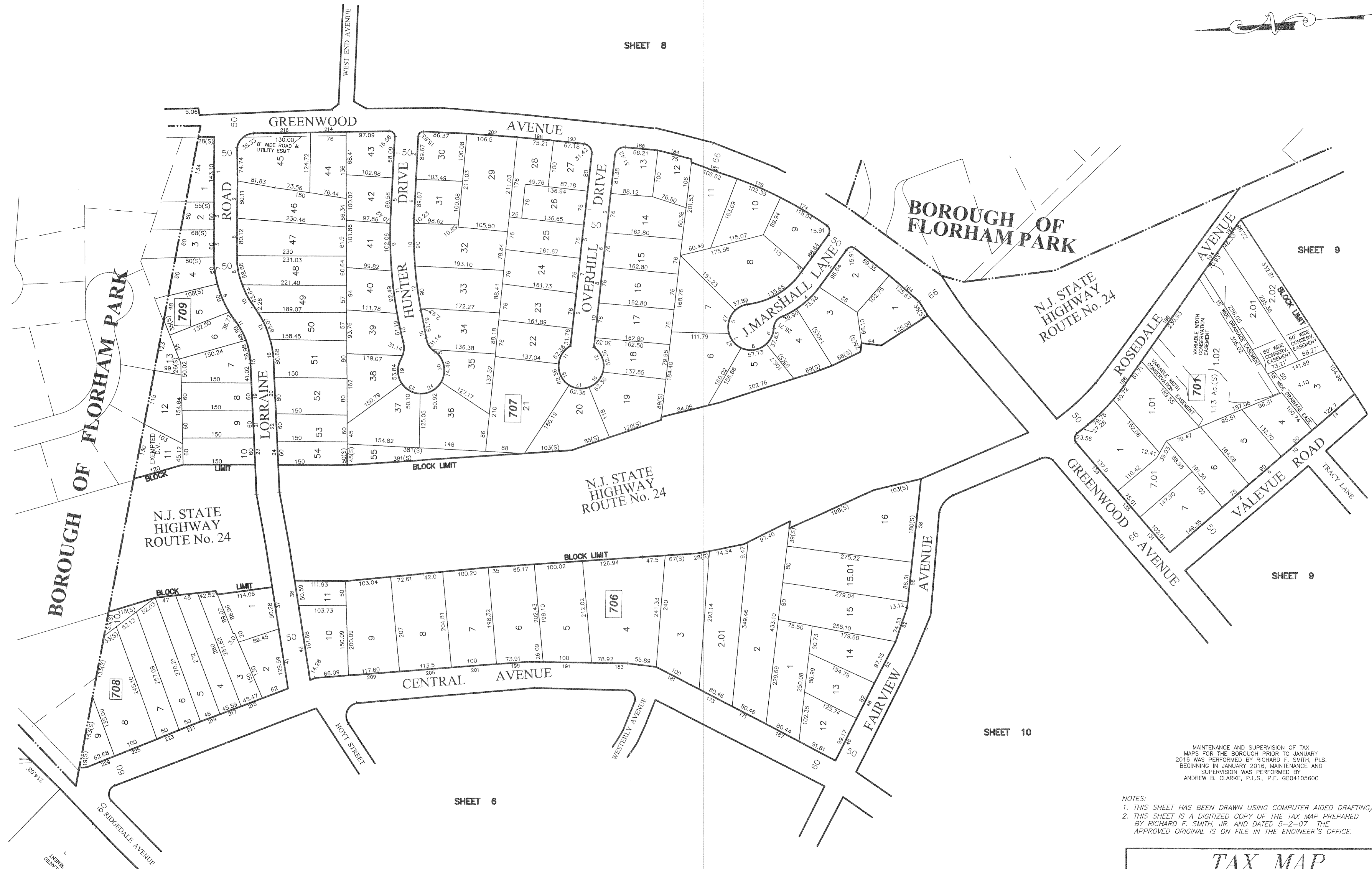
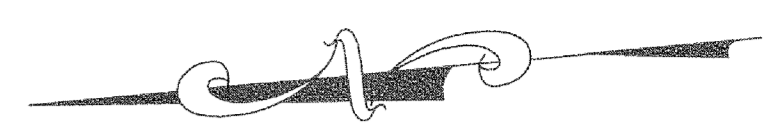


SHEET 8



SHEET 9

SHEET 9

SHEET 10

SHEET 6

MAINTENANCE AND SUPERVISION OF TAX MAPS FOR THE BOROUGH PRIOR TO JANUARY 2016 WAS PERFORMED BY RICHARD F. SMITH, PLS. BEGINNING IN JANUARY 2016, MAINTENANCE AND SUPERVISION WAS PERFORMED BY ANDREW B. CLARKE, P.L.S., P.E. GB04105600

NOTES:
1. THIS SHEET HAS BEEN DRAWN USING COMPUTER AIDED DRAFTING/DESIGN.
2. THIS SHEET IS A DIGITIZED COPY OF THE TAX MAP PREPARED BY RICHARD F. SMITH, JR. AND DATED 5-2-07. THE APPROVED ORIGINAL IS ON FILE IN THE ENGINEER'S OFFICE.

TAX MAP
BOROUGH OF MADISON
MORRIS COUNTY, NEW JERSEY
SCALE: 1"=100' DATE: 5-2-07
RICHARD F. SMITH, JR.
PROFESSIONAL LAND SURVEYOR NO. 24GS02504800
28 SCHUYLER PLACE
MORRISTOWN, NJ 07960

DIVISION OF TAXATION,
SIGNED BY:
RICHARD F. SMITH, JR.,
APPROVED BY:
SUE DAVISON, CTA
FEBRUARY 13, 2012, SERIAL # 921.

NO.	REVISION	DATE	D.C.B.	A.B.C.
1.	ANDREW CLARKE, PLS & PE - GENERAL REVIEW	5/4/18	D.C.B.	A.B.C.
2.				
3.				
4.				
5.				
6.				
7.				
8.				
9.				
10.				