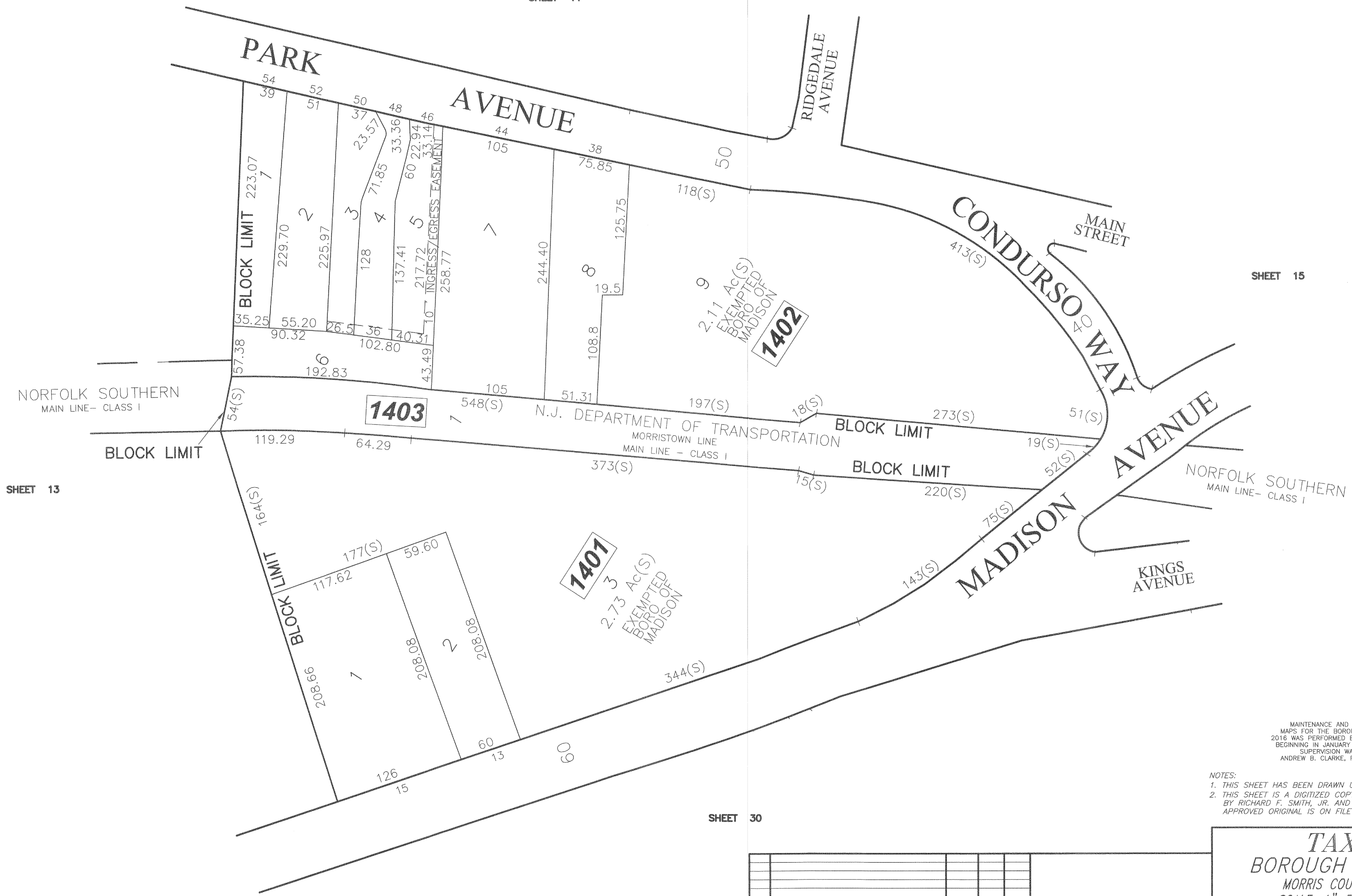


SHEET 11



SHEET 15

SHEET 13

SHEET 30

MAINTENANCE AND SUPERVISION OF TAX MAPS FOR THE BOROUGH PRIOR TO JANUARY 2016 WAS PERFORMED BY RICHARD F. SMITH, PLS. BEGINNING IN JANUARY 2016, MAINTENANCE AND SUPERVISION WAS PERFORMED BY ANDREW B. CLARKE, P.L.S., P.E. GB04105600

- NOTES:
1. THIS SHEET HAS BEEN DRAWN USING COMPUTER AIDED DRAFTING/DESIGN.
 2. THIS SHEET IS A DIGITIZED COPY OF THE TAX MAP PREPARED BY RICHARD F. SMITH, JR. AND DATED 5-2-07. THE APPROVED ORIGINAL IS ON FILE IN THE ENGINEER'S OFFICE.

TAX MAP
 BOROUGH OF MADISON
 MORRIS COUNTY, NEW JERSEY
 SCALE: 1"=50' DATE: 5-2-07
 RICHARD F. SMITH, JR.
 PROFESSIONAL LAND SURVEYOR NO. 24GS02504800
 28 SCHUYLER PLACE
 MORRISTOWN, NJ 07960

NO.	REVISION	DATE	BY	A.B.C.	APP'D
1.	ANDREW CLARKE, PLS & PE - GENERAL REVIEW	5/4/18	D.C.B.		

DIVISION OF TAXATION,
 SIGNED BY:
 RICHARD F. SMITH JR.,
 APPROVED BY:
 SUE DAVISON, CTA
 FEBRUARY 13, 2012, SERIAL # 921.