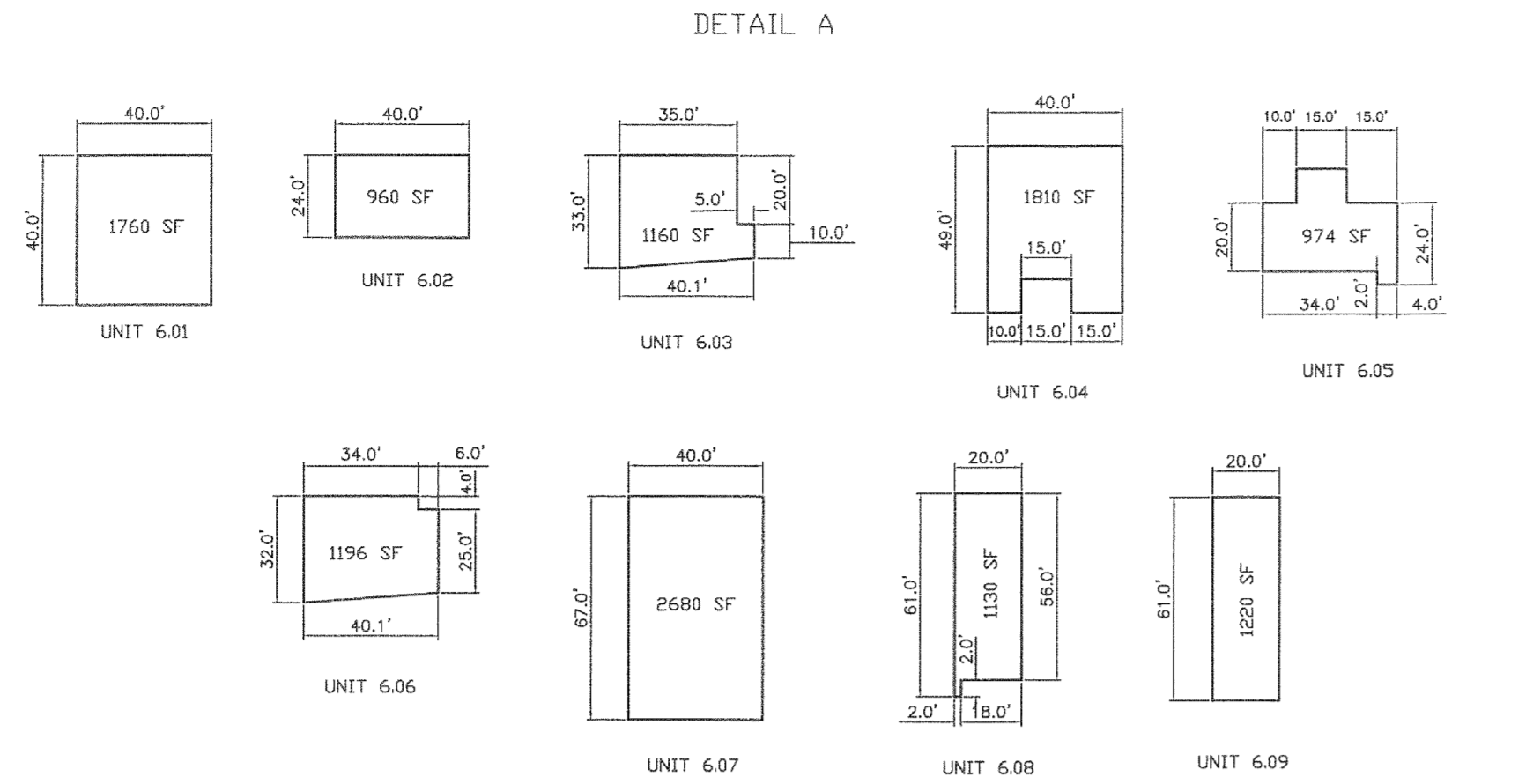


SHEET 19

BRITTIN STREET



78-80 MAIN STREET CONDOMINIUM
UNIT DETAILS
1" = 50'

SHEET 17

CENTRAL AVENUE

CHAPEL STREET



ELMER STREET

GREENWOOD AVENUE

1.96 Ac. 1803

SHEET 15

BOROUGH OF MADISON EXEMPTED

SEE DETAIL A

6.01
6.02
6.03
6.04
6.05
6.06
6.07
6.08
6.09

MAIN

SHEET 27

PROSPECT STREET

MAIN

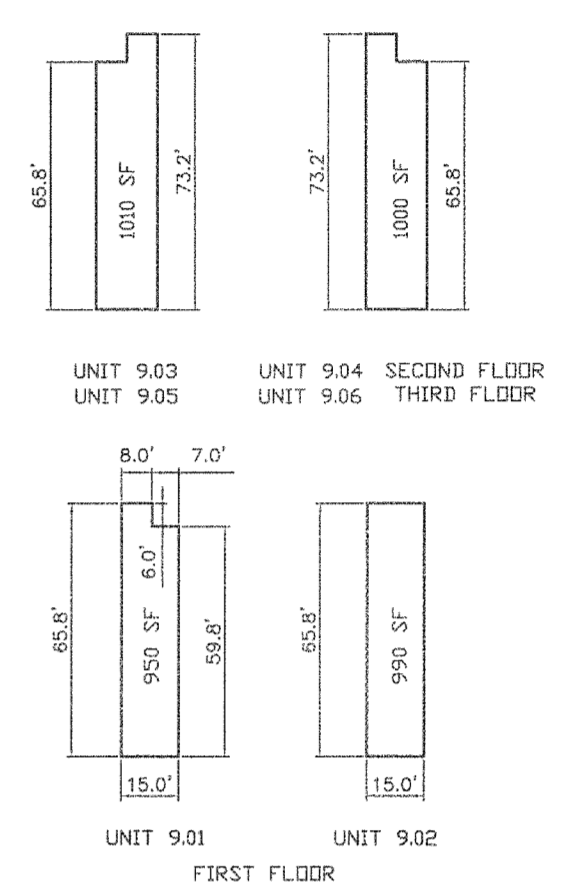
SHEET 26

BEAUPLAND PLACE

STREET



DETAIL B



ROSE POINTE CONDOMINIUM
UNIT DETAILS
1" = 50'

SHEET 20

MAINTENANCE AND SUPERVISION OF TAX MAPS FOR THE BOROUGH PRIOR TO JANUARY 2016 WAS PERFORMED BY RICHARD F. SMITH, PLS. BEGINNING IN JANUARY 2016, MAINTENANCE AND SUPERVISION WAS PERFORMED BY ANDREW B. CLARKE, P.L.S., P.E. GB04105600

NOTES:
1. THIS SHEET HAS BEEN DRAWN USING COMPUTER AIDED DRAFTING/DESIGN.
2. THIS SHEET IS A DIGITIZED COPY OF THE TAX MAP PREPARED BY RICHARD F. SMITH, JR. AND DATED 5-2-07 THE APPROVED ORIGINAL IS ON FILE IN THE ENGINEER'S OFFICE.

DIVISION OF TAXATION,
SIGNED BY:
RICHARD F. SMITH JR.,
APPROVED BY:
SUE DAVISON, CTA
FEBRUARY 13, 2012, SERIAL # 921.

1.	ANDREW CLARKE, PLS & PE - GENERAL REVIEW	5/4/18	D.C.B.	A.B.C.
NO.	REVISION	DATE	BY	APP'D

TAX MAP
BOROUGH OF MADISON
MORRIS COUNTY, NEW JERSEY
SCALE: 1"=50' DATE: 5-2-07
RICHARD F. SMITH, JR.
PROFESSIONAL LAND SURVEYOR NO. 24GS02504800
28 SCHUYLER PLACE
MORRISTOWN, NJ 07960