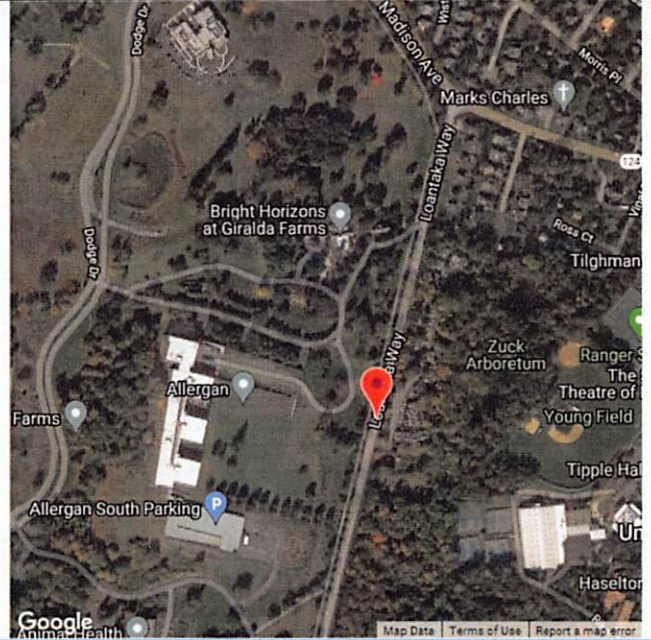


# SPEED DATA ANALYSIS

## Location



LOANTAKA WAY  
MADISON AVENUE  
Latitude: 40.762118  
Longitude: -74.432523



## Analysis Time Period



Start	End
4/19/2021 9:36 AM	4/28/2021 9:38 PM

## Vehicles Analyzed



52,115

## Peak Time of Violations



4/24/2021  
6:36 PM

## Speed Limit



40

## Enforcement Tolerance



10

## Total Enforceable Violations



2,925

## % Enforceable Violations



6%

## Average Speed



42

## Fastest Speed



80

## Speed Enforcement Evaluator

### Location

LOANTAKA WAY

### Total Percentage of Enforceable Violations

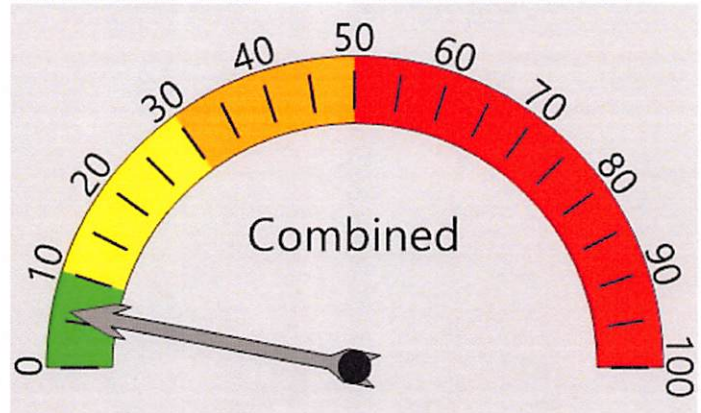
### Closest Cross Street

MADISON AVENUE

Posted Speed Limit      40 MPH  
Enforcement Tolerance    10 MPH  
Enforcement Limit        Greater than 50 MPH

### GPS

Latitude: 40.762118  
Longitude: -74.432523



Percent Speeding: 6%  
Rating: Low

### Analysis Dates

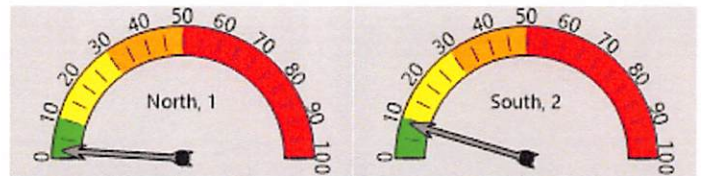
Start: 4/19/2021  
End: 4/28/2021

### Equipment Used

JAMMAR RADAR RECORDER

### Installed By

CPL. DIROCCO



Percent Speeding: 2%  
Rating: Low

Percent Speeding: 9%  
Rating: Low

#### Vehicle Totals - Combined

<= 3	<= 6	<= 9	<= 12	<= 15	<= 18	<= 21	<= 24	<= 27	<= 30	<= 33	<= 36	<= 39	> 39
0	0	0	25	48	102	228	329	384	516	1017	2768	7514	39186

85th Percentile: 46.9

#### Vehicle Totals - North, 1

<= 3	<= 6	<= 9	<= 12	<= 15	<= 18	<= 21	<= 24	<= 27	<= 30	<= 33	<= 36	<= 39	> 39
0	0	0	19	14	35	89	128	120	167	594	1899	5258	14934

85th Percentile: 43.9

#### Vehicle Totals - South, 2

<= 3	<= 6	<= 9	<= 12	<= 15	<= 18	<= 21	<= 24	<= 27	<= 30	<= 33	<= 36	<= 39	> 39
0	0	0	6	34	67	139	201	264	349	423	869	2256	24252

85th Percentile: 48.9

## SPEED DATA ANALYSIS

Slowest Speed

85th Percentile Speed



9



47

Enforcement Rating

**LOW**