

**Borough of Madison  
Bayley Ellard Field  
SRP PI #537604**

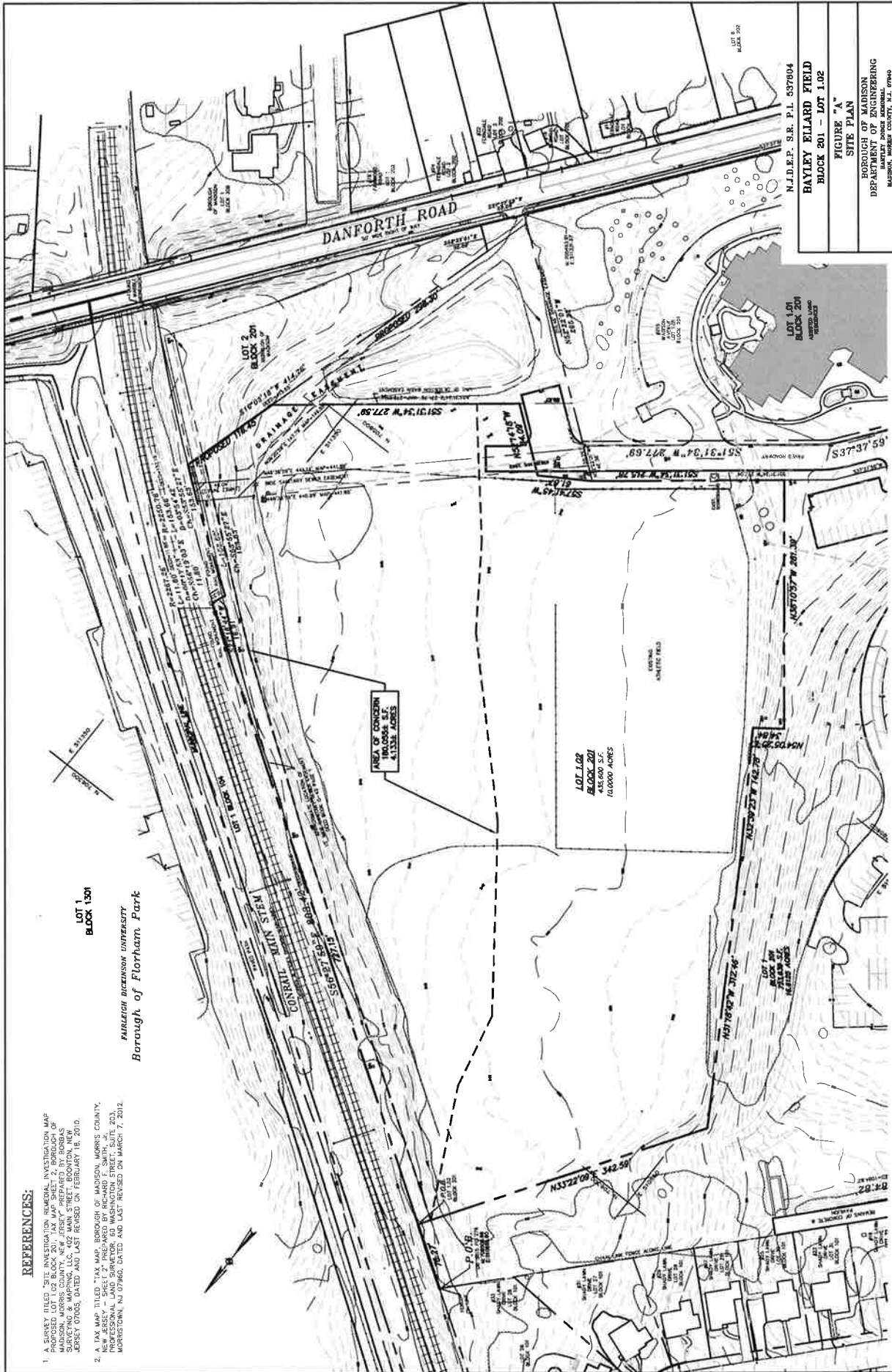
**Case Inventory Document**

I. Area(s) of Concern, Receptor and Emergency Response Tracking	Impacted Media	Contaminants of Concern	Exposure Route	Receptors		Current Status/Outcome
				Existing	Potential	
AOC - 1: Historic Fill	Soil	PAHs, Lead, Chlordane, PCB	Direct Contact	None	Human	<b>Case No. 10-01-08-0946-32:</b> Historic documentation provided by the Borough indicated that, from sometime prior to November 1970 through November 1972, landfill operations were conducted on the Bayley Ellard property, and that in May 1982, 30,000-cubic yards of additional soil material from the Schering/Plough site was used as fill to make the subject athletic fields the same elevation as the adjoining existing ball field. Review of historic aerials also indicated that between 1963 and 1970, extensive site clearing and re-grading occurred in the northeast corner of the property. The RI has fully delineated the contaminants to an approximate area of 4 acres, with a maximum depth of 14 feet. The typical COC's for historic fill were found to be in excess of May 2012 Soil Remediation Standards. The remedial investigation confirmed that a ground water investigation was not required. Institutional and engineering controls will be implemented as a restricted use remedial action. A cap and a fence are planned as engineering controls. A remedial action report will be submitted post cap construction.

**REFERENCES:**

1. A SURVEY TITLED "SEE INVESTIGATION PERSONAL INVESTIGATION MAP PROPOSED LOT 1 OF BLOCK 201, TAX MAP SHEET 2, BOROUGH OF MADISON, MORRIS COUNTY, NEW JERSEY," PREPARED BY BORNAS & ASSOCIATES, INC., 1000 ROUTE 100, SUITE 100, MORRISTOWN, NEW JERSEY 07960, DATED AND LAST REVISED ON FEBRUARY 18, 2010.
2. A TAX MAP TITLED "TAX MAP, BOROUGH OF MADISON, MORRIS COUNTY, NEW JERSEY," PREPARED BY BORNAS & ASSOCIATES, INC., PROFESSIONAL LAND SURVEYOR, 60 WASHINGTON STREET, SUITE 203, MORRISTOWN, NJ 07960, DATED AND LAST REVISED ON MARCH 7, 2012.

**LOT 1, 301  
BLOCK 1, 301**  
**PAROLEAN DICASSON UNIVERSITY**  
**Borough of Florham Park**



N.J.D.E.P. S.R. P.I. 587804  
**BAYLEY ELLIARD FIELD**  
**BLOCK 301 - LOT 1.02**

**FIGURE "A"**  
**SITE PLAN**  
BOROUGH OF MADISON  
DEPARTMENT OF ENGINEERING  
BAYLEY ELLIARD FIELD  
MADISON, NJ 07940

**ROBERT A. VOGEL, P.E.**  
PROFESSIONAL ENGINEER No. J.E. 3463  
DATE: 03/14/12  
SCALE: 1"=100'

NO.	ISSUED FOR	REVISIONS	DATE	BY	CHK	APP
1.	ISSUED FOR SUBMITTANCE					



DATE: 03/14/12  
SCALE: 1"=100'