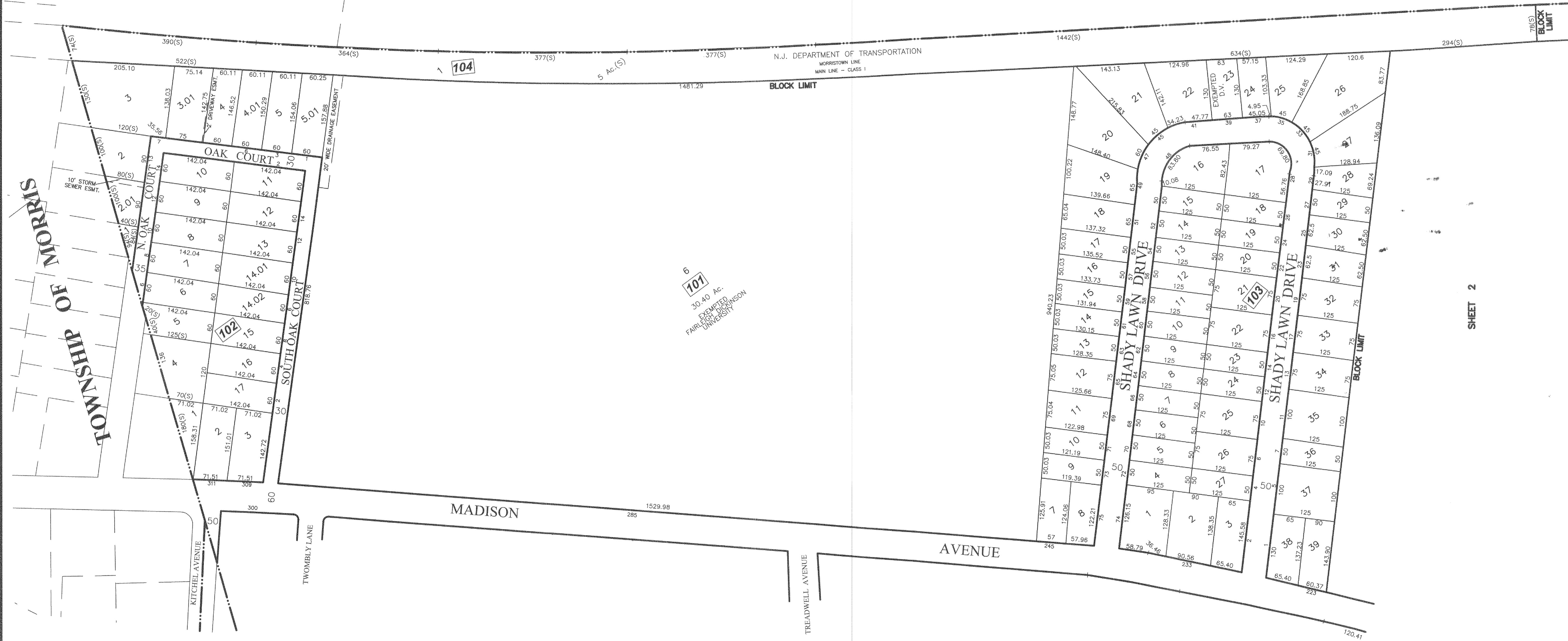
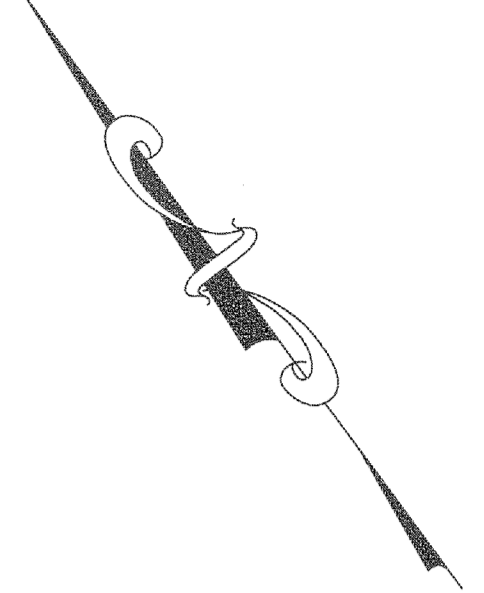


BOROUGH OF FLORHAM PARK



6
 101
 30.40 Ac.
 EXEMPTED
 HIGH SCHOOL
 UNIVERSITY

SHEET 2

SHEET 33

MAINTENANCE AND SUPERVISION OF TAX MAPS FOR THE BOROUGH PRIOR TO JANUARY 2016 WAS PERFORMED BY RICHARD F. SMITH, PLS. BEGINNING IN JANUARY 2016, MAINTENANCE AND SUPERVISION WAS PERFORMED BY ANDREW B. CLARKE, P.L.S., P.E. GB04105600

- NOTES:
- THIS SHEET HAS BEEN DRAWN USING COMPUTER AIDED DRAFTING/DESIGN.
 - THIS SHEET IS A DIGITIZED COPY OF THE TAX MAP PREPARED BY RICHARD F. SMITH, JR. AND DATED 5-2-07 THE APPROVED ORIGINAL IS ON FILE IN THE ENGINEER'S OFFICE.

NO.	REVISION	DATE	BY	APP'D
1.	ANDREW CLARKE, PLS & PE - GENERAL REVIEW	5/4/18	D.C.B.	A.B.C.

DIVISION OF TAXATION,
 SIGNED BY:
 APPROVED BY:
 SUE DAVISON, CTA
 FEBRUARY 13, 2012, SERIAL # 921.
 RICHARD F. SMITH JR.,

TAX MAP
BOROUGH OF MADISON
 MORRIS COUNTY, NEW JERSEY
 SCALE: 1"=100' DATE: 5-2-07
RICHARD F. SMITH, JR.
 PROFESSIONAL LAND SURVEYOR NO. 24GS02504800
 28 SCHUYLER PLACE
 MORRISTOWN, NJ 07960