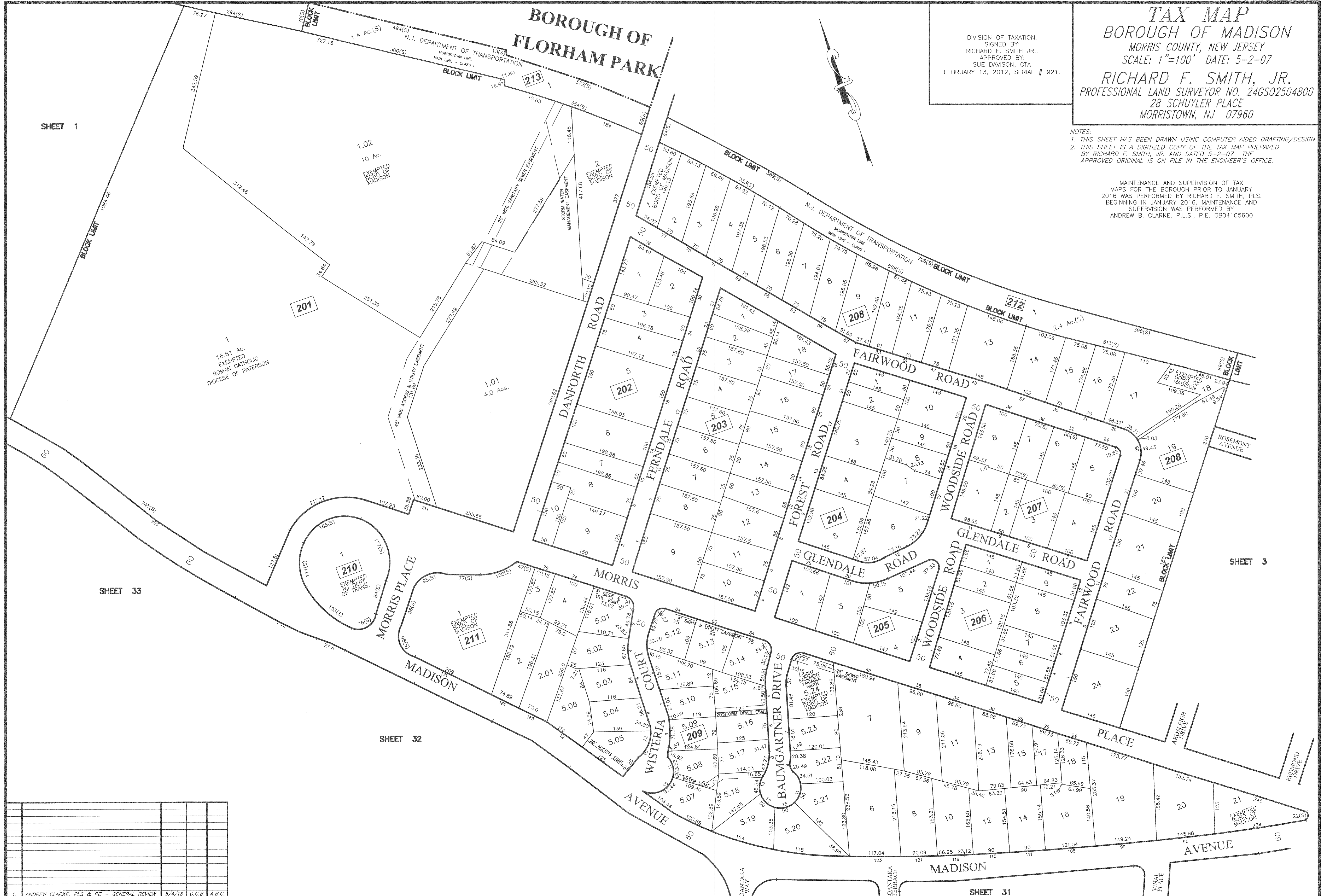


DIVISION OF TAXATION,  
 SIGNED BY:  
 RICHARD F. SMITH, JR.,  
 APPROVED BY:  
 SUE DAVISON, CTA  
 FEBRUARY 13, 2012, SERIAL # 921.

**TAX MAP**  
**BOROUGH OF MADISON**  
 MORRIS COUNTY, NEW JERSEY  
 SCALE: 1"=100' DATE: 5-2-07  
**RICHARD F. SMITH, JR.**  
 PROFESSIONAL LAND SURVEYOR NO. 24GS02504800  
 28 SCHUYLER PLACE  
 MORRISTOWN, NJ 07960

NOTES:  
 1. THIS SHEET HAS BEEN DRAWN USING COMPUTER AIDED DRAFTING/DESIGN.  
 2. THIS SHEET IS A DIGITIZED COPY OF THE TAX MAP PREPARED BY RICHARD F. SMITH, JR. AND DATED 5-2-07 THE APPROVED ORIGINAL IS ON FILE IN THE ENGINEER'S OFFICE.

MAINTENANCE AND SUPERVISION OF TAX MAPS FOR THE BOROUGH PRIOR TO JANUARY 2016 WAS PERFORMED BY RICHARD F. SMITH, P.L.S. BEGINNING IN JANUARY 2016, MAINTENANCE AND SUPERVISION WAS PERFORMED BY ANDREW B. CLARKE, P.L.S., P.E. GB04105600



NO.	REVISION	DATE	BY	APP'D
1.	ANDREW CLARKE, PLS & PE - GENERAL REVIEW	5/4/18	D.C.B.	A.B.C.

I:\storagesrv\Engineering\CAD Files\2015 TAX MAP ANDREW CLARK LS1002.dwg, 002, 5/3/2018 12:06:54 PM, KP 3000 Series