

**GEOFFREY L. COGAN**  
 Architect, Planner, AIA, NJ CERT. 21A00065000  
 8 KING STREET, 5TH FL., ROBERTSON, N.J. 07068  
 TEL: (908) 242-0450  
 FAX: (908) 242-0454  
 EMAIL: GCOGAN@GFCAL.COM

**DERCK & REDSON**  
 BETTING  
 CAMPUSES, DOWNTOWNS, ATHLETICS  
 3011 SPRING STREET, SUITE 200, BELLEVILLE, PA 19823  
 WWW.DERCKANDREDSON.COM (717) 833-2222

**FAIRLEIGH DICKINSON ATHLETIC FIELDS**  
 ANIMATED PRELIMINARY / FINAL SITE DEVELOPMENT PLAN  
 LOT 6 / BLOCK 101 / ZONE UNIVERSITY  
 288 MADISON AVENUE, SUITE 100  
 MADISON BOROUGH, MORRIS COUNTY, NEW JERSEY

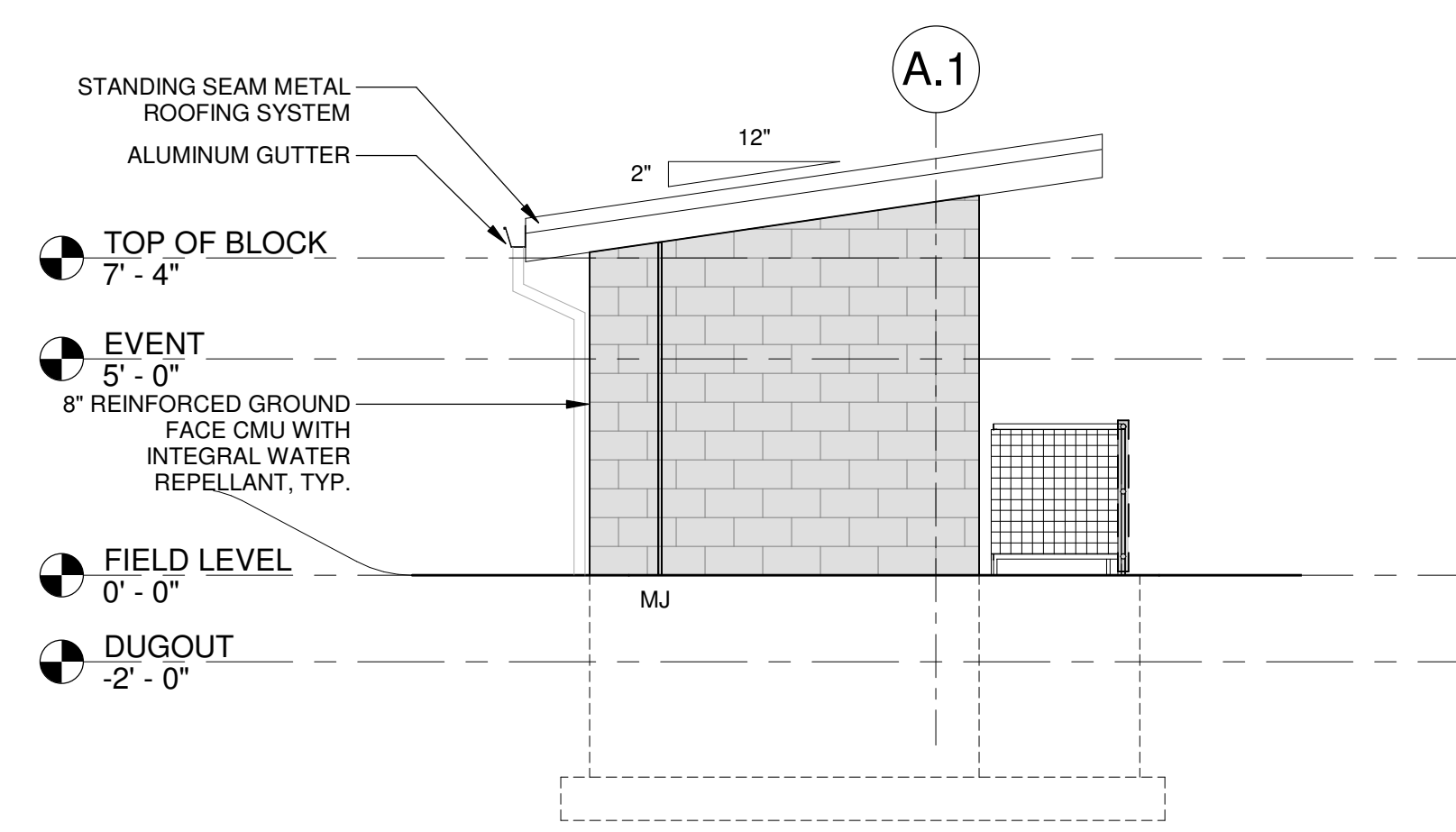
**DUGOUT PLANS & DETAILS**

**REVISIONS:**

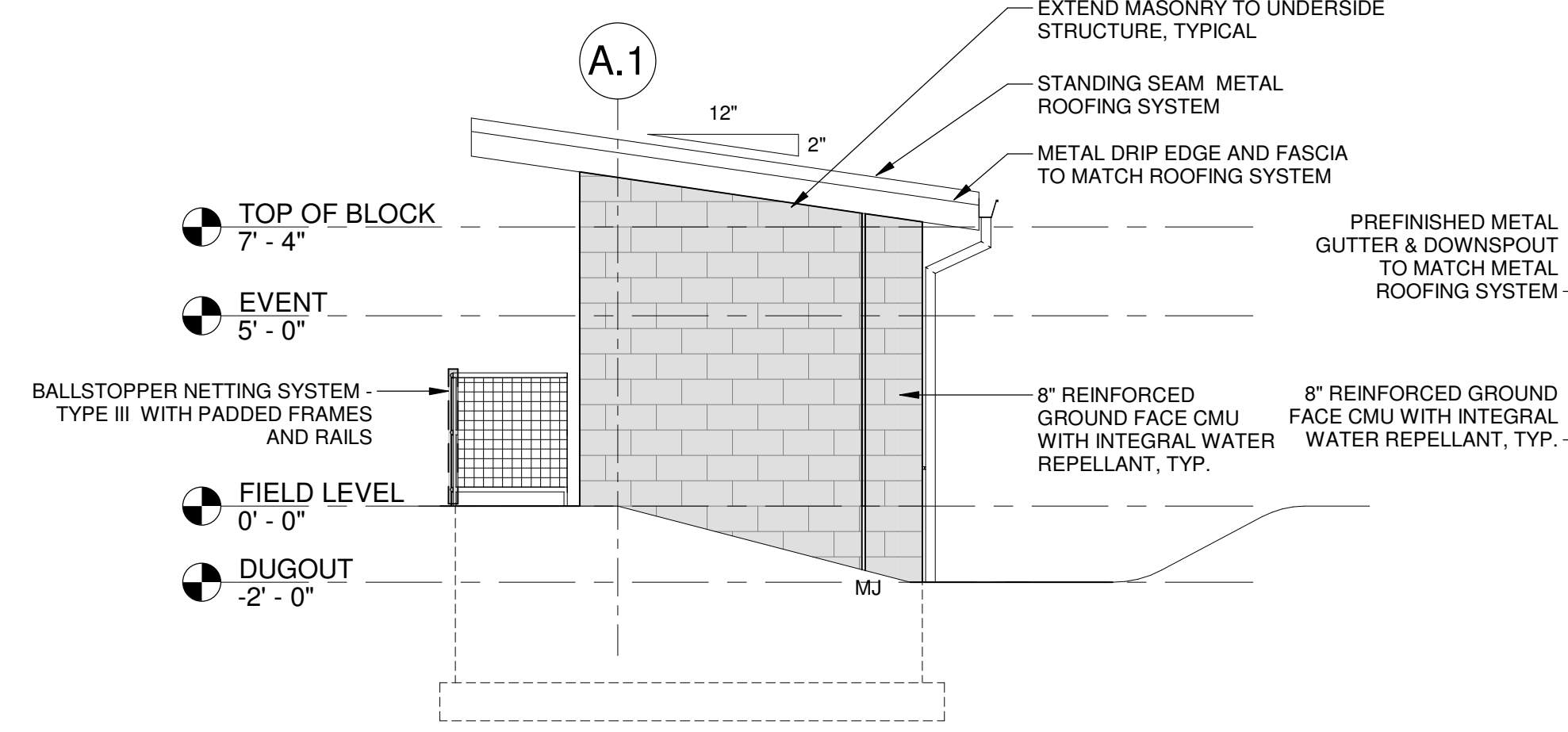
No.	DATE	DESCRIPTION OF CHANGES

DATE: 03/04/2020  
 PROJECT #: 19A50  
 DRAWING: JTW  
 PNL: JLL  
 PIC: SES

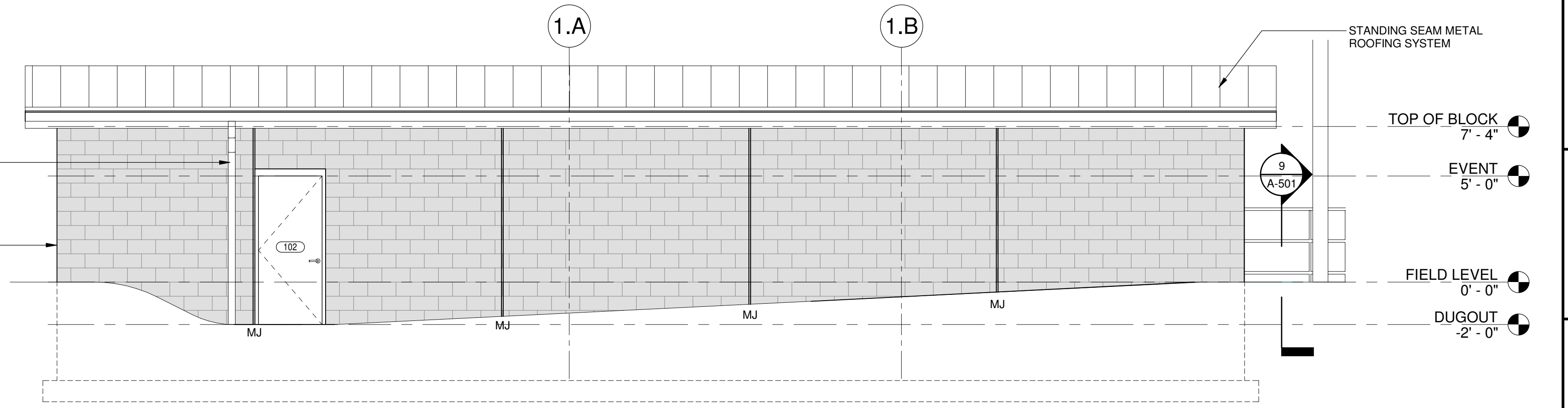
DRAWING NO. **A-102**



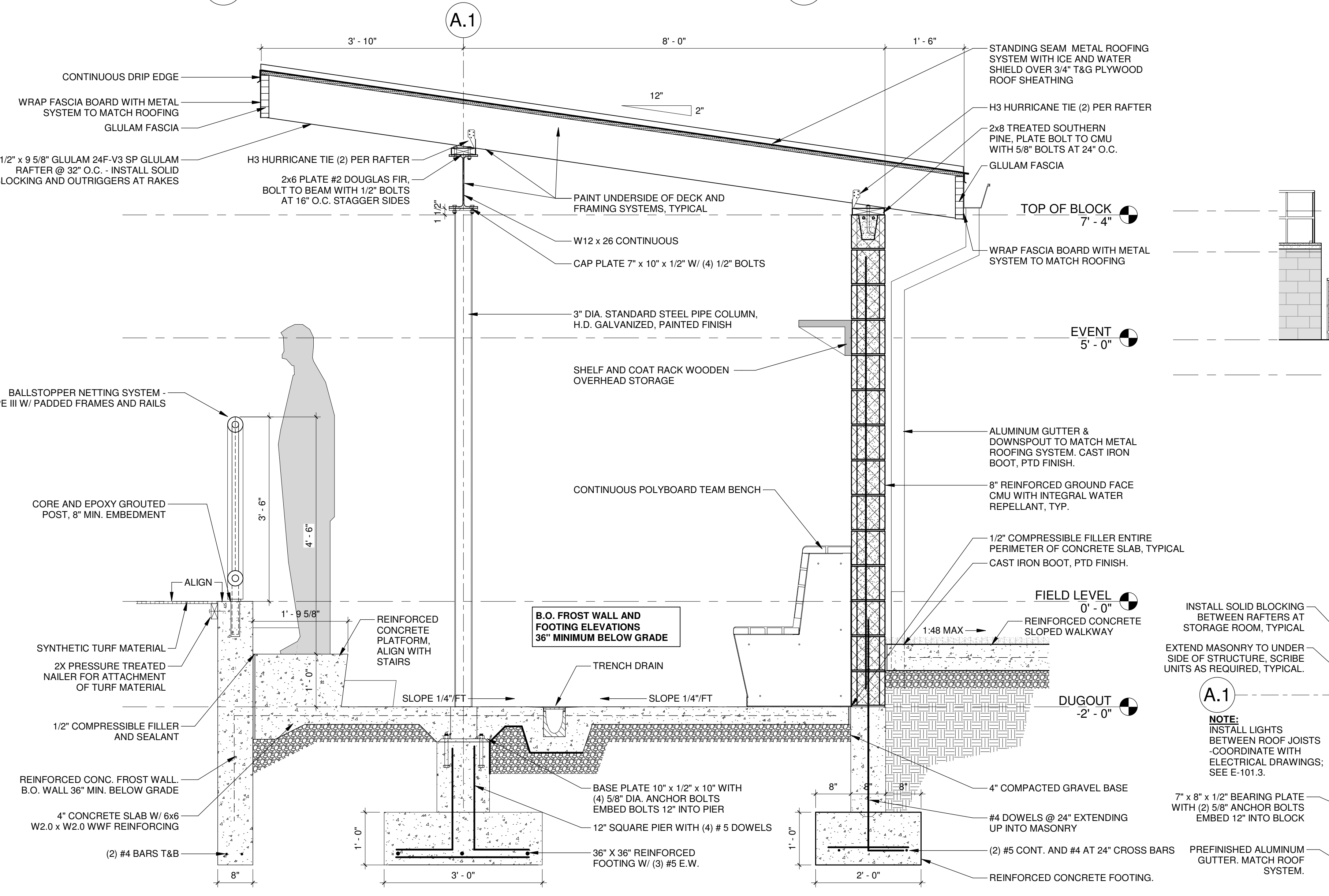
**6 LEFT SIDE ELEVATION**  
 1/4" = 1'-0"



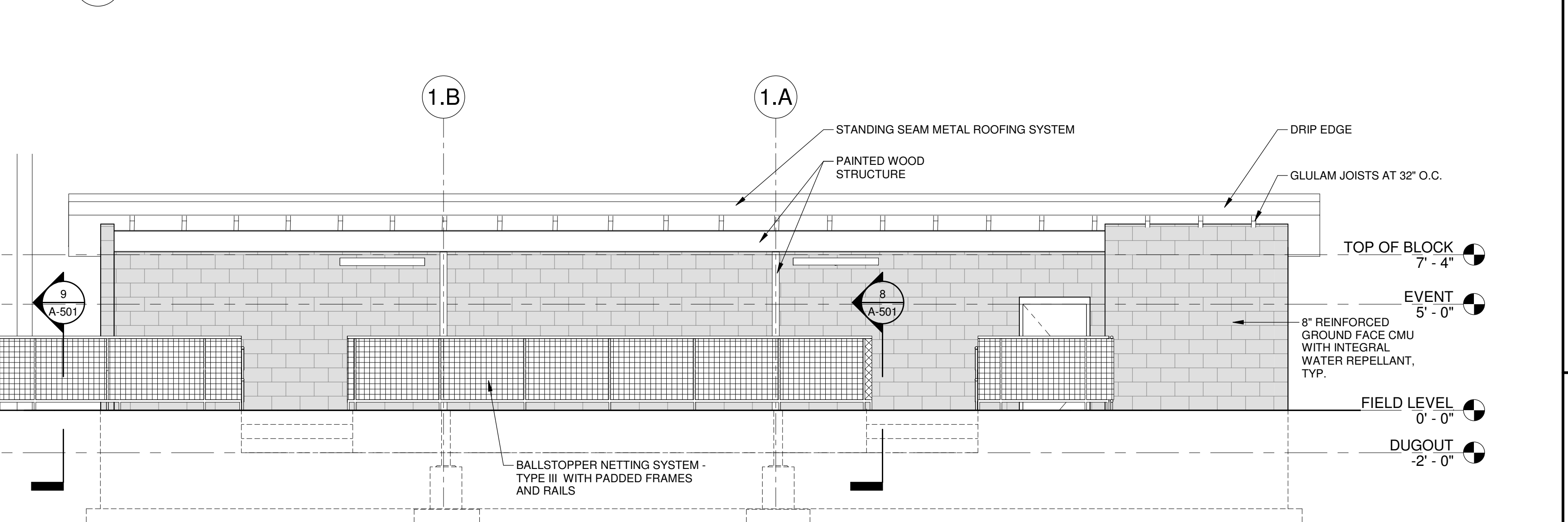
**5 RIGHT SIDE ELEVATION**  
 1/4" = 1'-0"



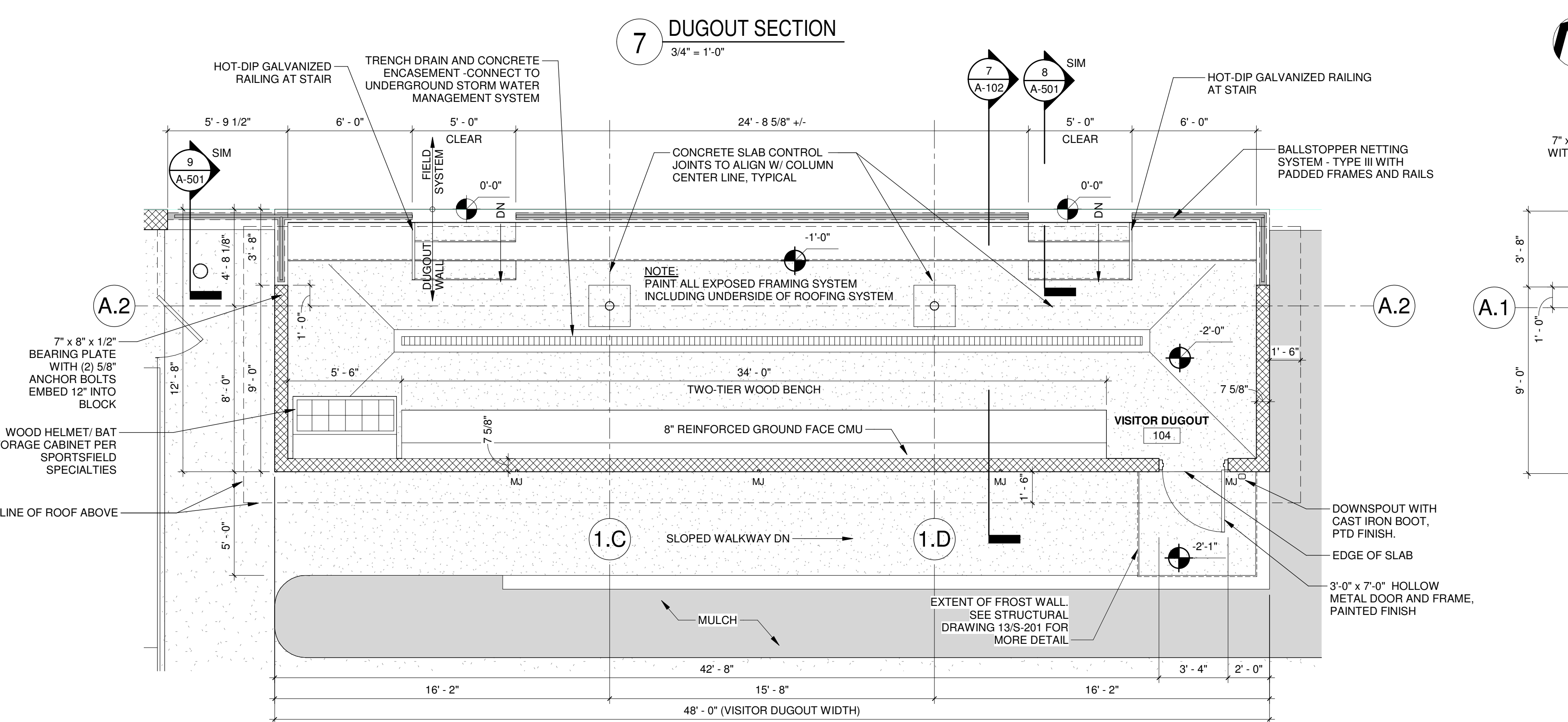
**4 BACK ELEVATION**  
 1/4" = 1'-0"



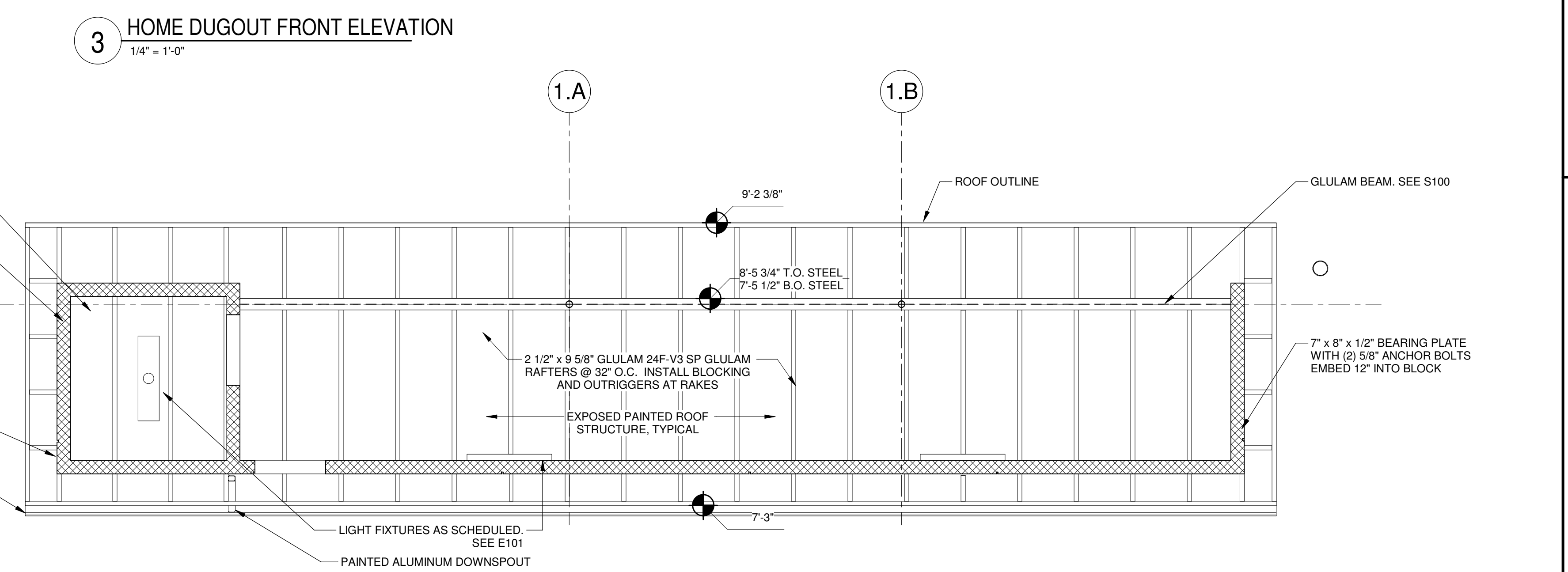
**7 DUGOUT SECTION**  
 3/4" = 1'-0"



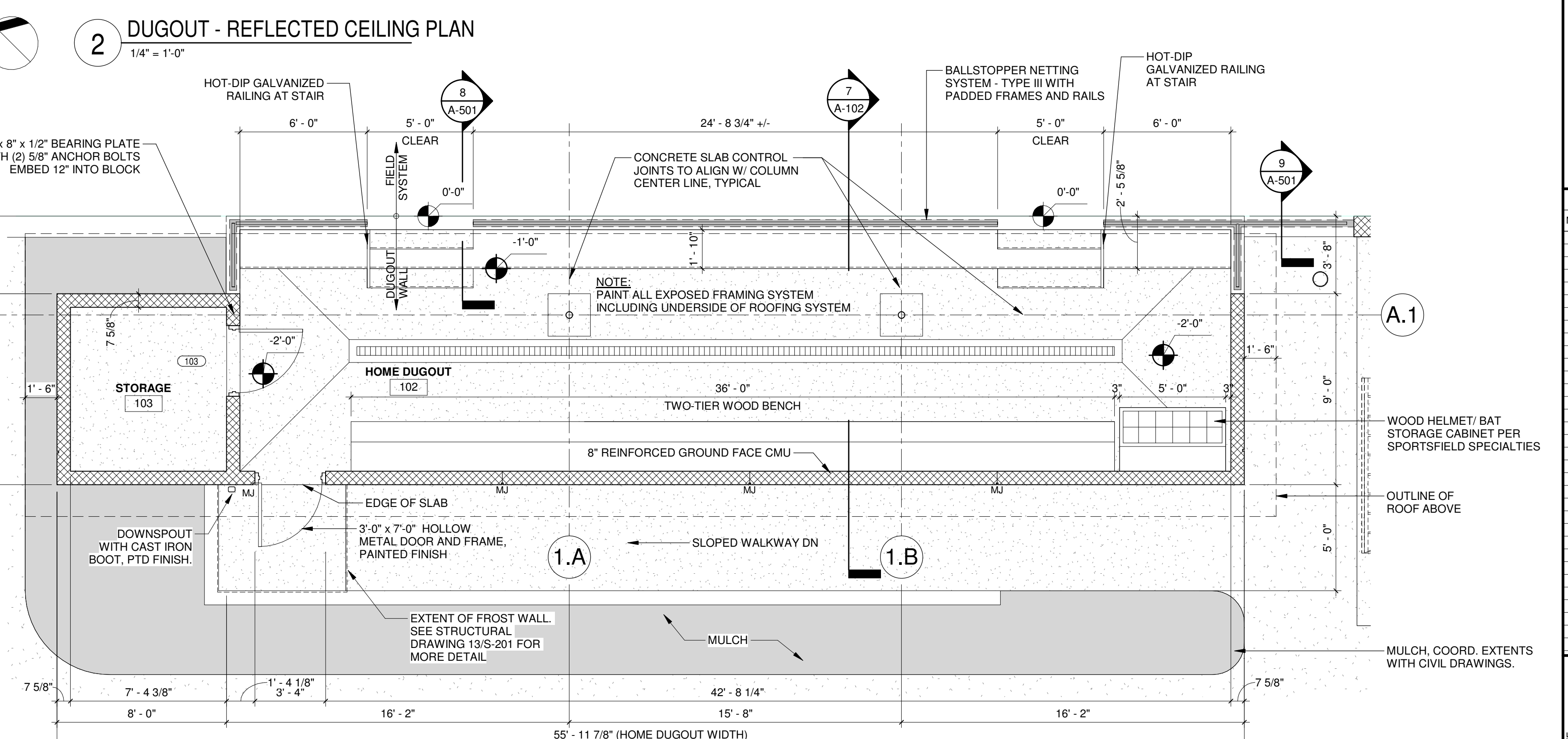
**3 HOME DUGOUT FRONT ELEVATION**  
 1/4" = 1'-0"



**8 VISITOR DUGOUT FLOOR PLAN**  
 1/4" = 1'-0"



**2 DUGOUT - REFLECTED CEILING PLAN**  
 1/4" = 1'-0"



**1 HOME DUGOUT FLOOR PLAN**  
 1/4" = 1'-0"