

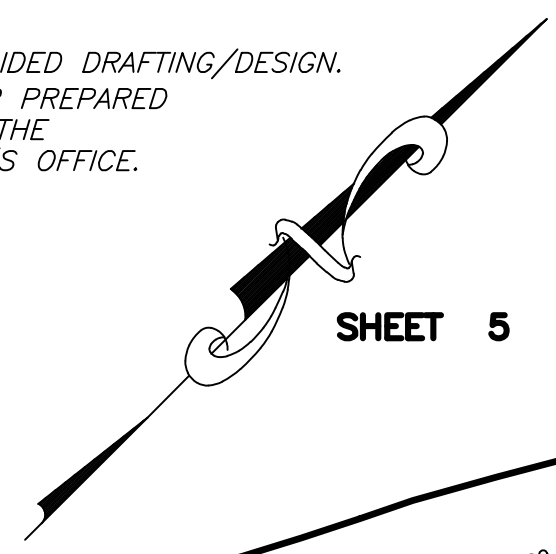
TAX MAP
BOROUGH OF MADISON
 MORRIS COUNTY, NEW JERSEY
 SCALE: 1"=100' DATE: 5-2-07
RICHARD F. SMITH, JR.
 PROFESSIONAL LAND SURVEYOR NO. 24GS02504800
 28 SCHUYLER PLACE
 MORRISTOWN, NJ 07960

NO.	REVISION	DATE:	BY:	APP'D
2.	ANDREW CLARKE, PLS & PE - GENERAL REVIEW	9/20/19	D.C.B.	A.B.C.
1.	ANDREW CLARKE, PLS & PE - GENERAL REVIEW	5/4/18	D.C.B.	A.B.C.

DIVISION OF TAXATION,
 SIGNED BY:
 RICHARD F. SMITH JR.,
 APPROVED BY:
 SUE DAVISON, CTA
 FEBRUARY 13, 2012, SERIAL # 921.

MAINTENANCE AND SUPERVISION OF TAX
 MAPS FOR THE BOROUGH FROM JANUARY
 2016 WAS PERFORMED BY RICHARD F. SMITH, PLS.
 BEGINNING IN JANUARY 2016, MAINTENANCE AND
 SUPERVISION WAS PERFORMED BY
 ANDREW B. CLARKE, P.L.S., P.E. GB04105600

NOTES:
 1. THIS SHEET HAS BEEN DRAWN USING COMPUTER AIDED DRAFTING/DESIGN.
 2. THIS SHEET IS A DIGITIZED COPY OF THE TAX MAP PREPARED
 BY RICHARD F. SMITH, JR. AND DATED 5-2-07. THE
 APPROVED ORIGINAL IS ON FILE IN THE ENGINEER'S OFFICE.



\\storagesv\Engineering\CAD Files\2015 TAX MAP ANDREW CLARK LS\010.dwg, Layout1, 1/21/2020 9:59:55 AM,
 bucklevd, DWG To PDF, p3