

**TAX MAP**  
**BOROUGH OF MADISON**  
 MORRIS COUNTY, NEW JERSEY  
 SCALE: 1"=50' DATE: 5-2-07  
**RICHARD F. SMITH, JR.**  
 PROFESSIONAL LAND SURVEYOR NO. 24GS02504800  
 28 SCHUYLER PLACE  
 MORRISTOWN, NJ 07960

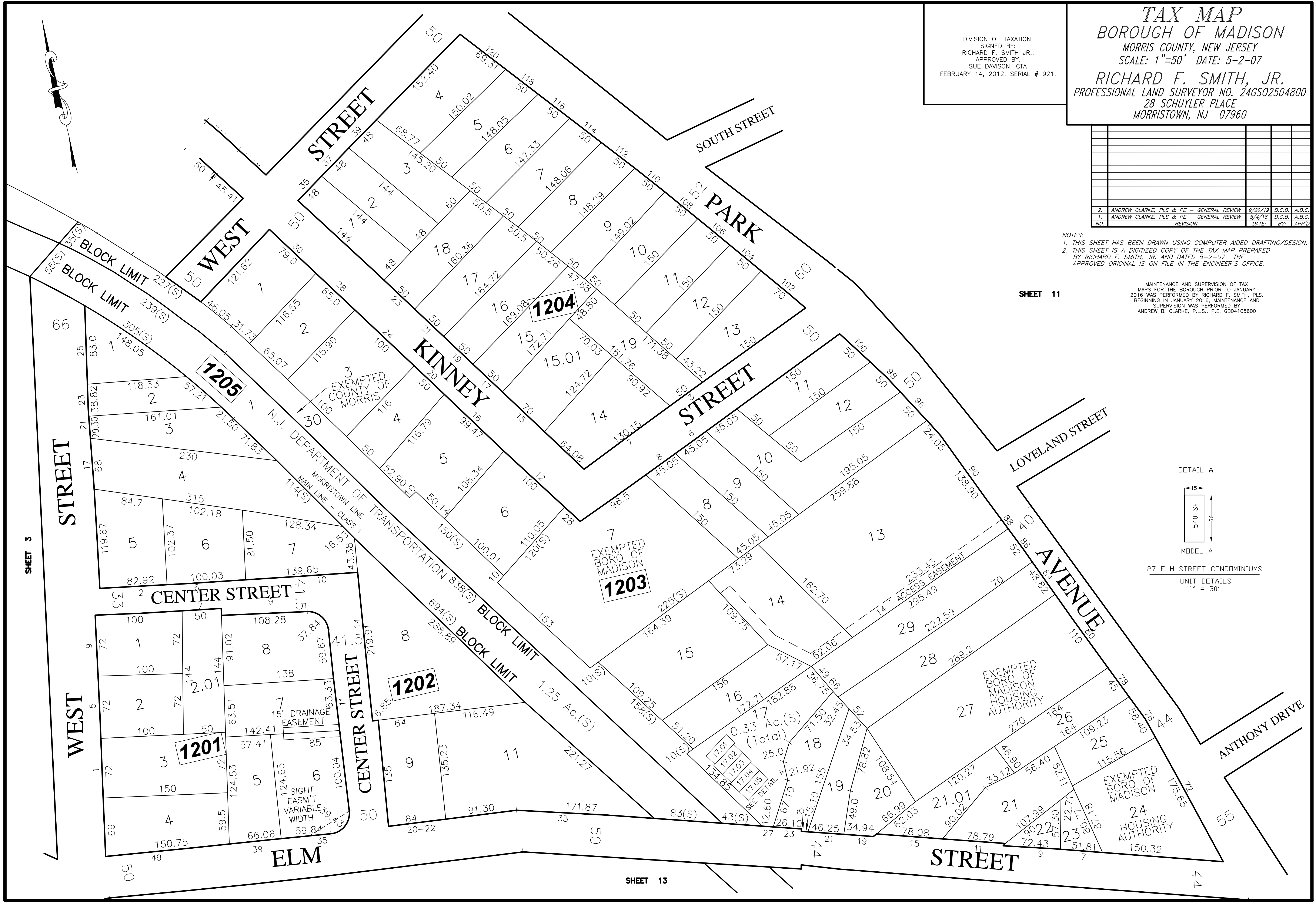
DIVISION OF TAXATION,  
 SIGNED BY:  
 RICHARD F. SMITH JR.,  
 APPROVED BY:  
 SUE DAVISON, CTA  
 FEBRUARY 14, 2012, SERIAL # 921.

NO.	REVISION	DATE	BY	APP'D
2.	ANDREW CLARKE, PLS & PE - GENERAL REVIEW	9/20/19	D.C.B.	A.B.C.
1.	ANDREW CLARKE, PLS & PE - GENERAL REVIEW	5/4/18	D.C.B.	A.B.C.

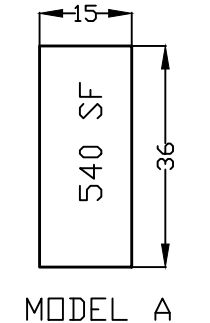
NOTES:  
 1. THIS SHEET HAS BEEN DRAWN USING COMPUTER AIDED DRAFTING/DESIGN.  
 2. THIS SHEET IS A DIGITIZED COPY OF THE TAX MAP PREPARED BY RICHARD F. SMITH, JR. AND DATED 5-2-07. THE APPROVED ORIGINAL IS ON FILE IN THE ENGINEER'S OFFICE.

MAINTENANCE AND SUPERVISION OF TAX MAPS FOR THE BOROUGH PRIOR TO JANUARY 2016 WAS PERFORMED BY RICHARD F. SMITH, PLS. BEGINNING IN JANUARY 2016, MAINTENANCE AND SUPERVISION WAS PERFORMED BY ANDREW B. CLARKE, P.L.S., P.E. G804105600

SHEET 11



DETAIL A



27 ELM STREET CONDOMINIUMS UNIT DETAILS 1" = 30'

SHEET 3

SHEET 13