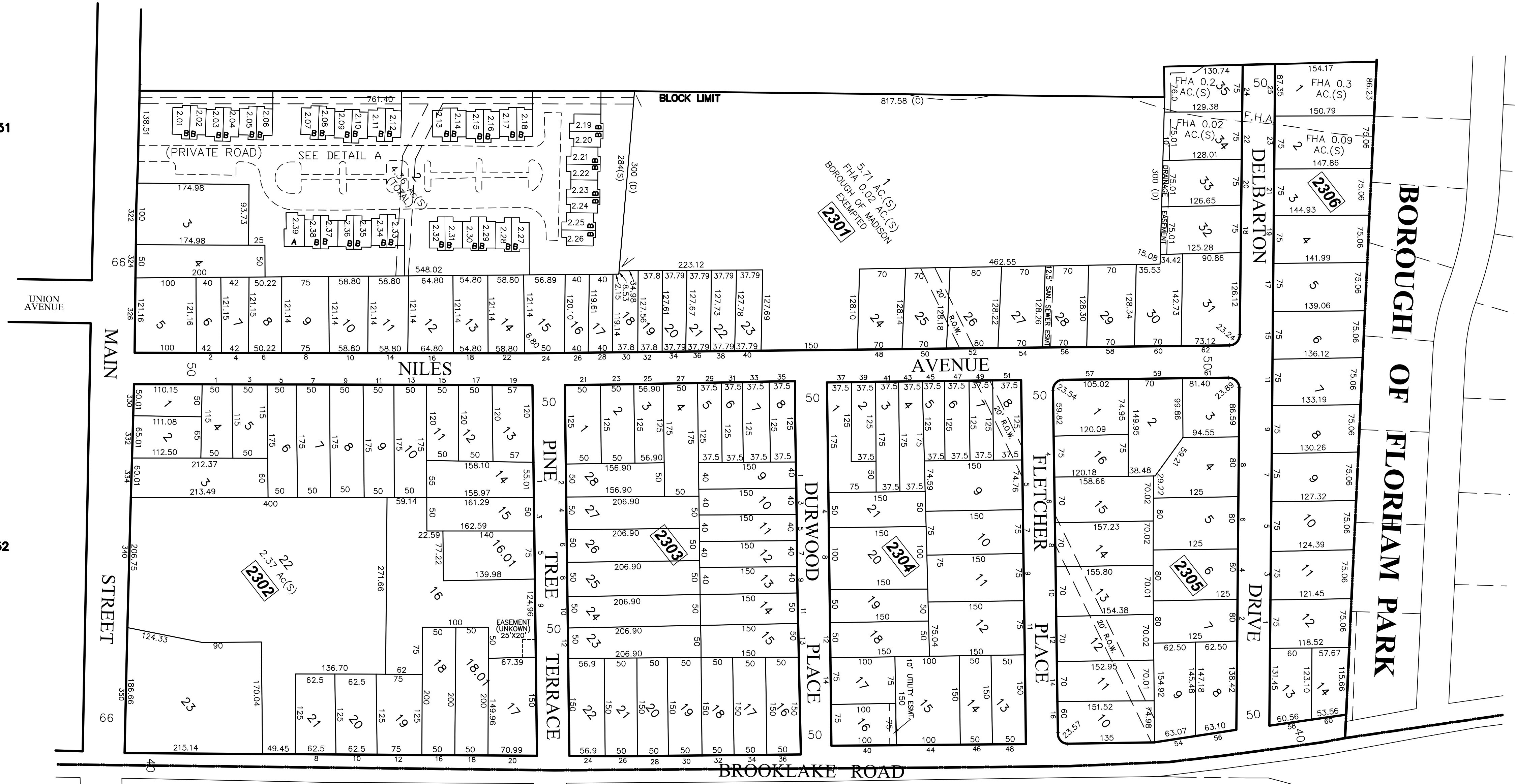


ROSEWOOD AT MADISON TOWNHOUSE CONDOMINIUMS
UNIT DETAILS
1" = 30'

SHEET 22

SHEET 51

SHEET 52



MAINTENANCE AND SUPERVISION OF TAX MAPS FOR THE BOROUGH PRIOR TO JANUARY 2016 WAS PERFORMED BY RICHARD F. SMITH, JR. BEGINNING IN JANUARY 2016, MAINTENANCE AND SUPERVISION WAS PERFORMED BY ANDREW B. CLARKE, P.L.S., P.E. GB04105600

DIVISION OF TAXATION,
SIGNED BY:
RICHARD F. SMITH, JR.,
APPROVED BY:
SUE DAVISON, CTA
FEBRUARY 13, 2012, SERIAL # 921.

BOROUGH OF CHATHAM

NOTES:
1. THIS SHEET HAS BEEN DRAWN USING COMPUTER AIDED DRAFTING/DESIGN.
2. THIS SHEET IS A DIGITIZED COPY OF THE TAX MAP PREPARED BY RICHARD F. SMITH, JR. AND DATED 5-2-07. THE APPROVED ORIGINAL IS ON FILE IN THE ENGINEER'S OFFICE.

NO.	REVISION	DATE	BY	APP'D
2.	ANDREW CLARKE, PLS & PE - GENERAL REVIEW	9/20/19	D.C.B.	A.B.C.
1.	ANDREW CLARKE, PLS & PE - GENERAL REVIEW	5/4/18	D.C.B.	A.B.C.

TAX MAP
BOROUGH OF MADISON
MORRIS COUNTY, NEW JERSEY
SCALE: 1"=100' DATE: 5-2-07
RICHARD F. SMITH, JR.
PROFESSIONAL LAND SURVEYOR NO. 24GS02504800
28 SCHUYLER PLACE
MORRISTOWN, NJ 07960