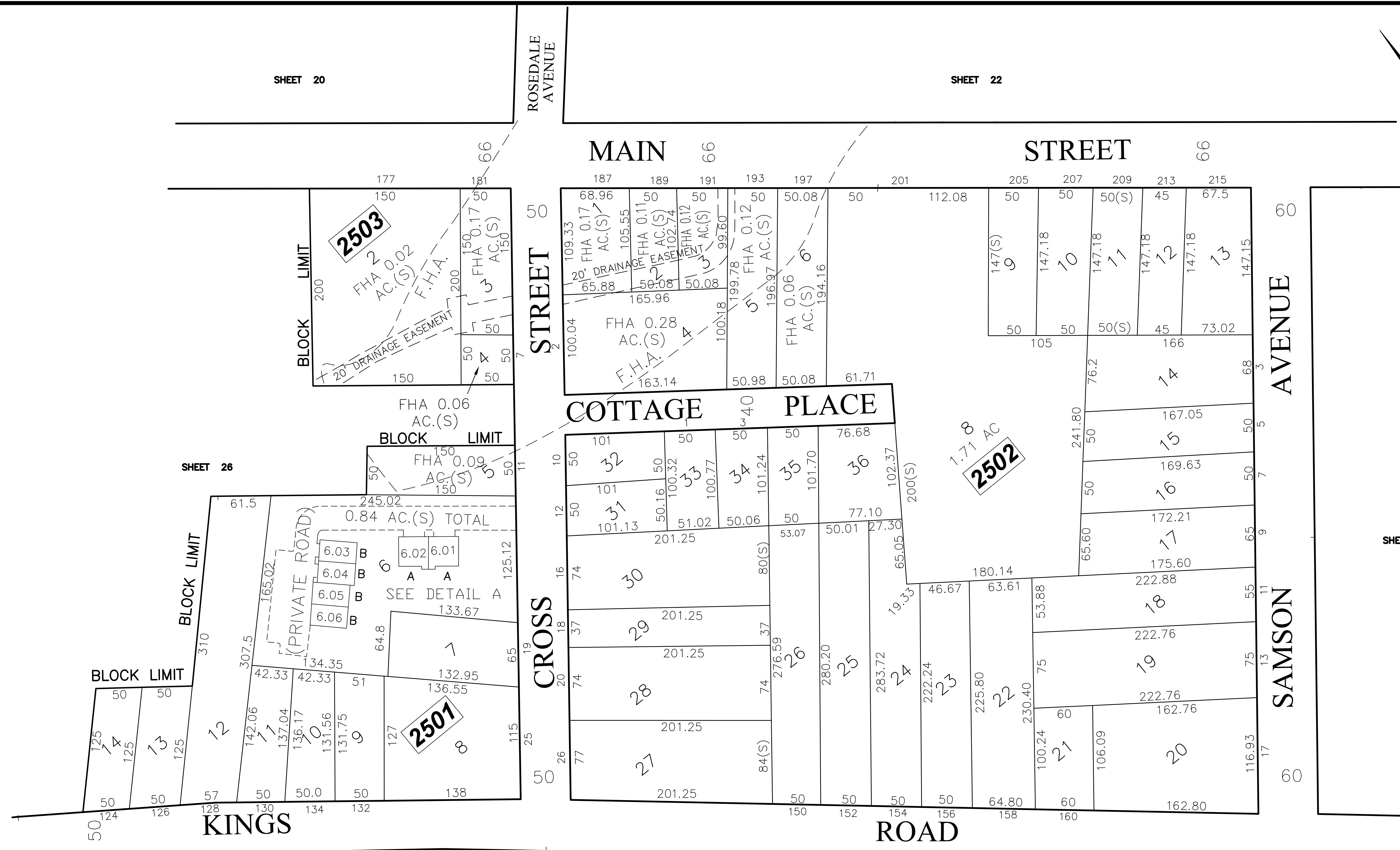
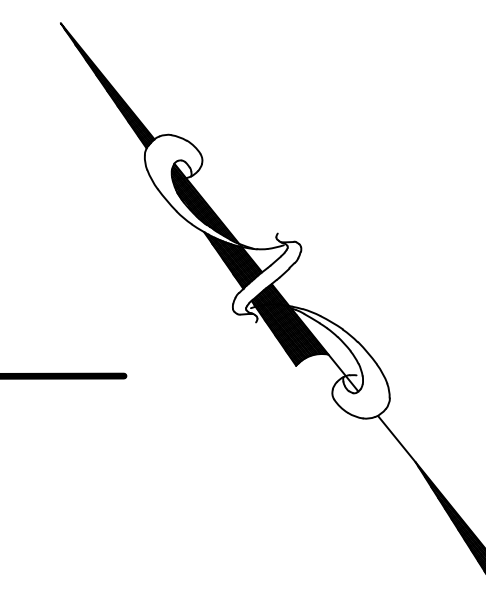


SHEET 20

SHEET 22



SHEET 24

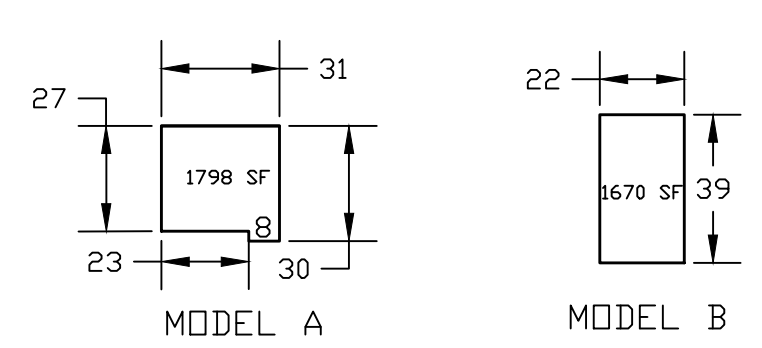
SHEET 39

\\storagesrv\Engineering\CAD Files\2015 TAX MAP ANDREW CLARK LS\025.dwg, 025, 1/8/2020 11:45:38 AM, buckelew.dwg To PDF.pc3

SHEET 26

SHEET 38

DETAIL A



ALL UNITS ARE 2 FLRS TOTAL BLOCK 2501

NOTES:
1. THIS SHEET HAS BEEN DRAWN USING COMPUTER AIDED DRAFTING/DESIGN.
2. THIS SHEET IS A DIGITIZED COPY OF THE TAX MAP PREPARED BY RICHARD F. SMITH, JR. AND DATED 5-2-07 THE APPROVED ORIGINAL IS ON FILE IN THE ENGINEER'S OFFICE.

MAINTENANCE AND SUPERVISION OF TAX MAPS FOR THE BOROUGH PRIOR TO JANUARY 2016 WAS PERFORMED BY RICHARD F. SMITH, PLS. BEGINNING IN JANUARY 2016, MAINTENANCE AND SUPERVISION WAS PERFORMED BY ANDREW B. CLARKE, P.L.S., P.E. GB04105600

NO.	REVISION	DATE	BY	APP'D
2.	ANDREW CLARKE, PLS & PE - GENERAL REVIEW	9/20/19	D.C.B.	A.B.C.
1.	ANDREW CLARKE, PLS & PE - GENERAL REVIEW	5/4/18	D.C.B.	A.B.C.

DIVISION OF TAXATION,
SIGNED BY:
RICHARD F. SMITH JR.,
APPROVED BY:
SUE DAVISON, CTA
FEBRUARY 13, 2012, SERIAL # 921.

TAX MAP
BOROUGH OF MADISON
MORRIS COUNTY, NEW JERSEY
SCALE: 1"=50' DATE: 5-2-07
RICHARD F. SMITH, JR.
PROFESSIONAL LAND SURVEYOR NO. 24GS02504800
28 SCHUYLER PLACE
MORRISTOWN, NJ 07960