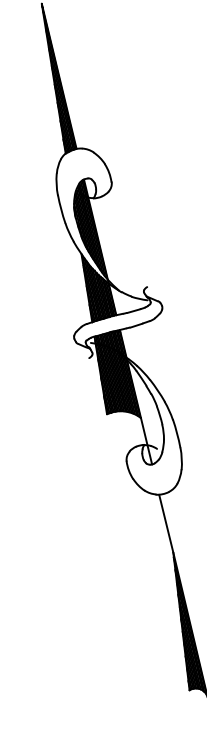


MATCH LINE
SEE SHEET 31

SHEET 30

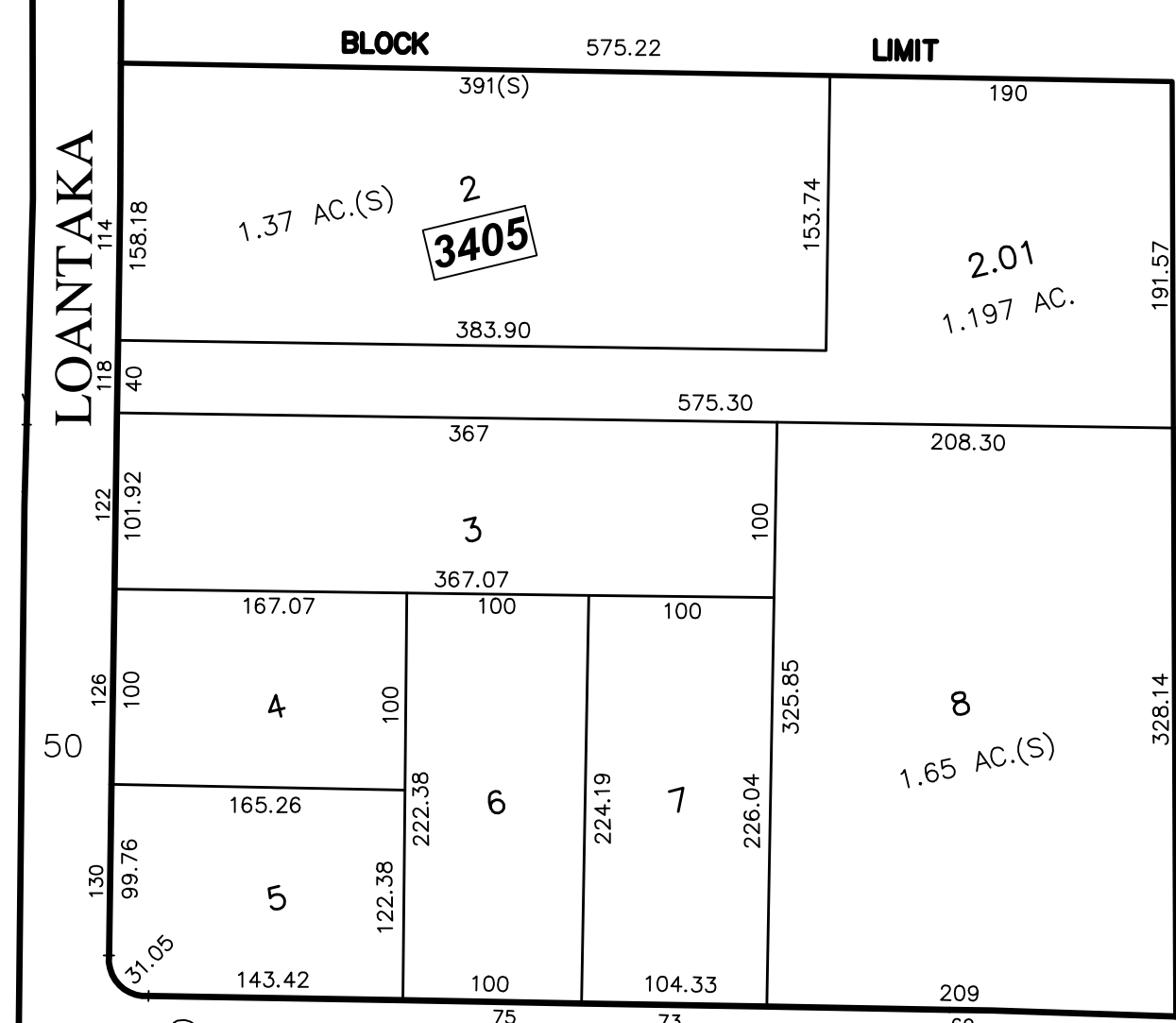


1
TOTAL LOT AREA 163 AC.
EXEMPTED
DREW UNIVERSITY
3001

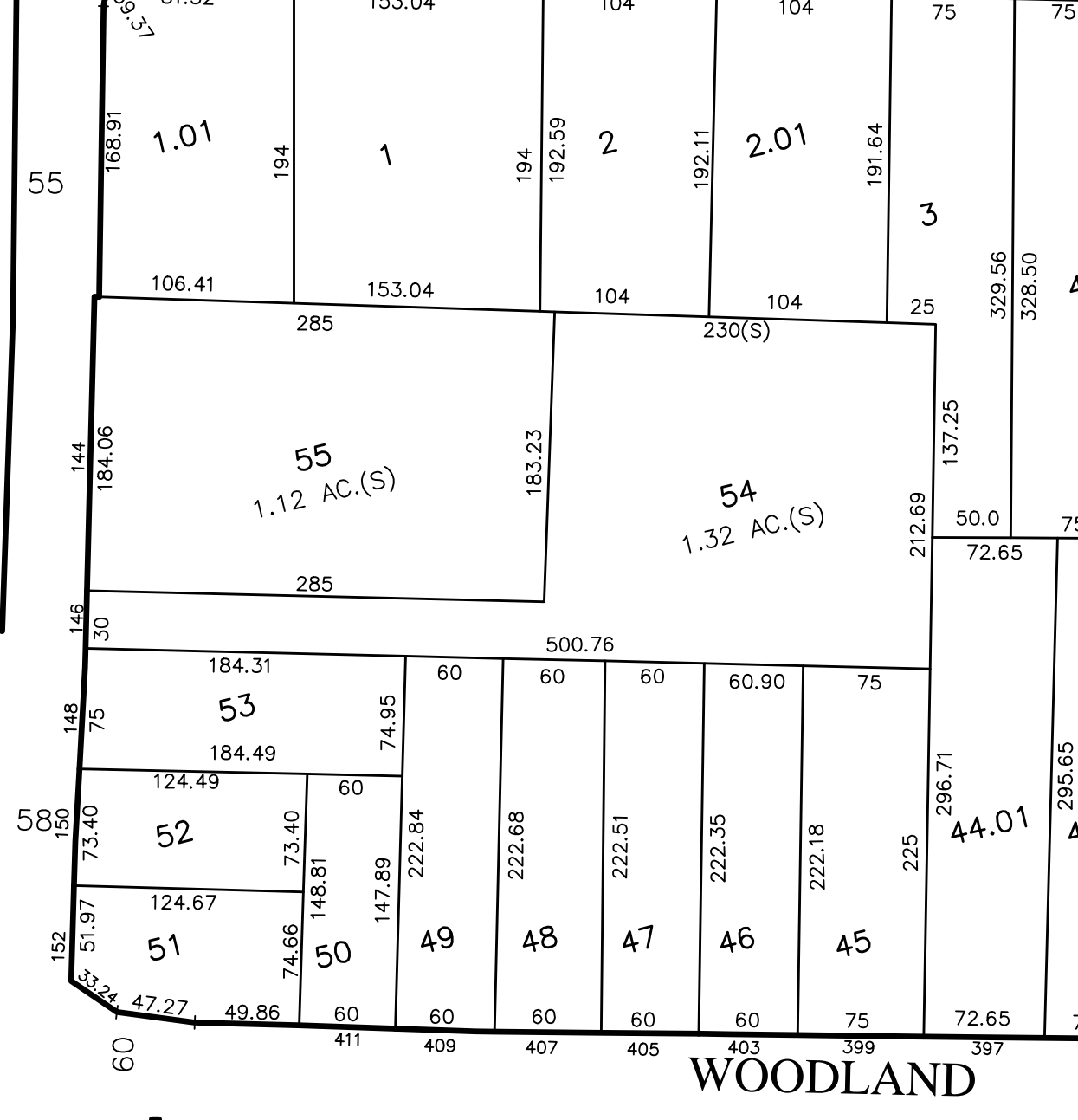
WAY

LOANTAKA

SHEET 32



GLENWILD ROAD



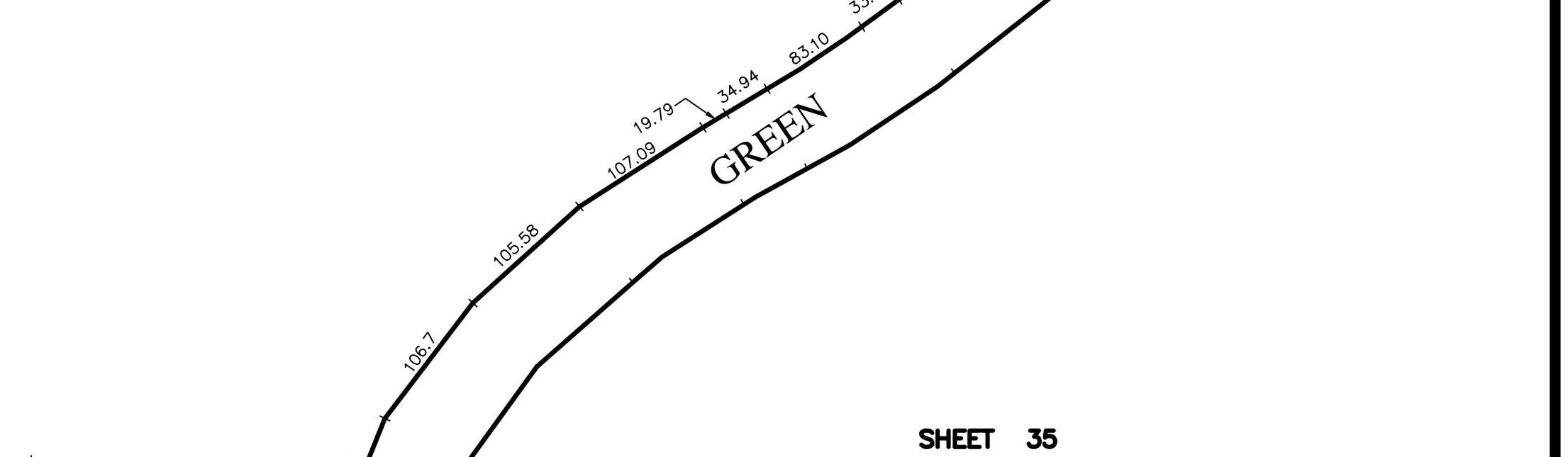
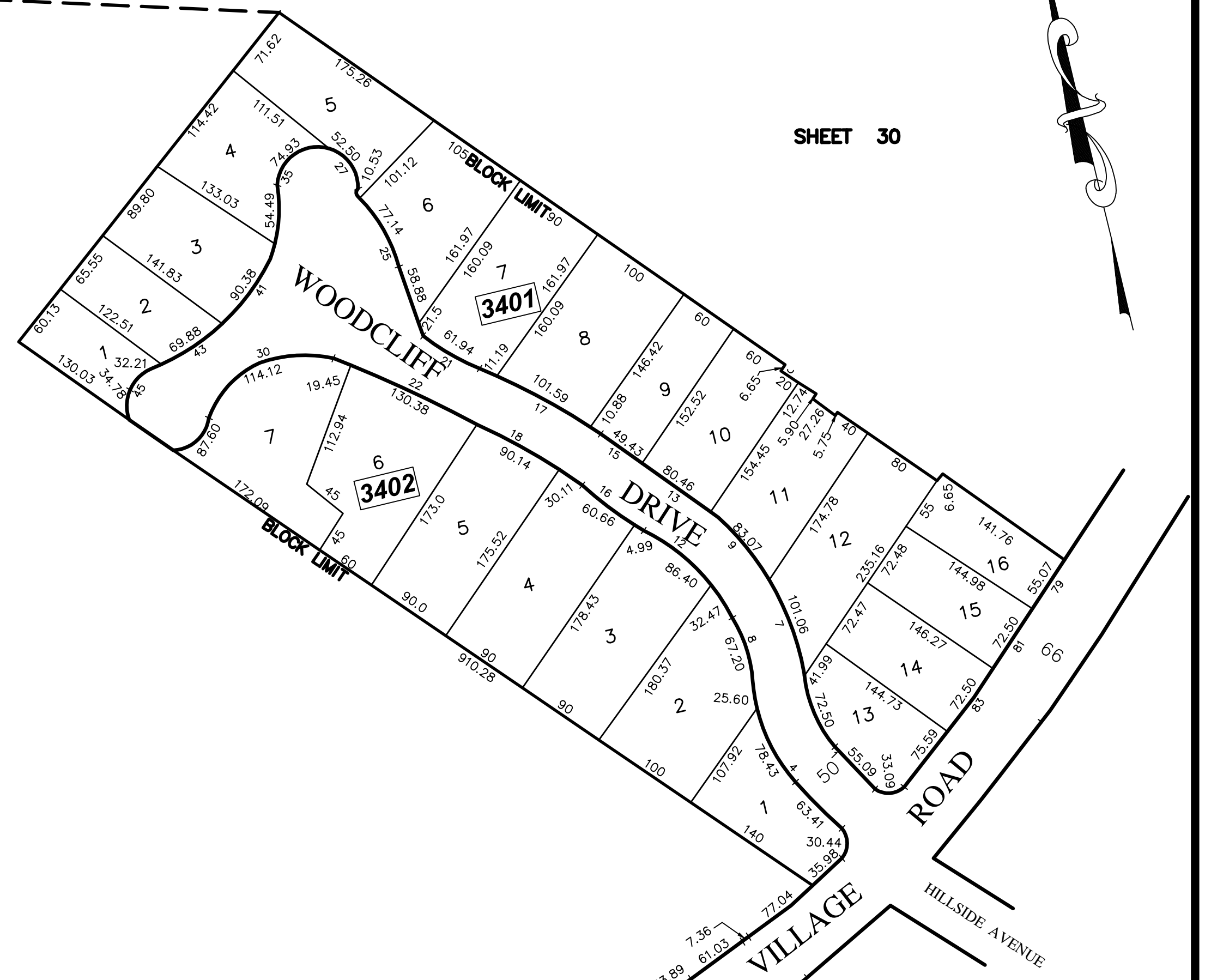
WOODLAND ROAD



3404

33
6.85 AC.(S)
EXEMPTED
BOARD OF EDUCATION

SHEET 43



SHEET 35

MAINTENANCE AND SUPERVISION OF TAX MAPS FOR THE BOROUGH PRIOR TO JANUARY 2016 WAS PERFORMED BY RICHARD F. SMITH, PLS. BEGINNING IN JANUARY 2016, MAINTENANCE AND SUPERVISION WAS PERFORMED BY ANDREW B. CLARKE, P.L.S., P.E. GB04105600

- NOTES:
1. THIS SHEET HAS BEEN DRAWN USING COMPUTER AIDED DRAFTING/DESIGN.
 2. THIS SHEET IS A DIGITIZED COPY OF THE TAX MAP PREPARED BY RICHARD F. SMITH, JR. AND DATED 5-2-07 THE APPROVED ORIGINAL IS ON FILE IN THE ENGINEER'S OFFICE.

2.	ANDREW CLARKE, PLS & PE - GENERAL REVIEW	9/23/19	D.C.B.	A.B.C.
1.	ANDREW CLARKE, PLS & PE - GENERAL REVIEW	5/4/18	D.C.B.	A.B.C.
NO.	REVISION	DATE:	BY:	APP'D

SHEET 42

DIVISION OF TAXATION,
SIGNED BY:
RICHARD F. SMITH JR.,
APPROVED BY:
SUE DAVISON, CTA
FEBRUARY 13, 2012, SERIAL # 921.

TAX MAP
BOROUGH OF MADISON
MORRIS COUNTY, NEW JERSEY
SCALE: 1"=100' DATE: 5-2-07
RICHARD F. SMITH, JR.
PROFESSIONAL LAND SURVEYOR NO. 24GS02504800
28 SCHUYLER PLACE
MORRISTOWN, NJ 07960