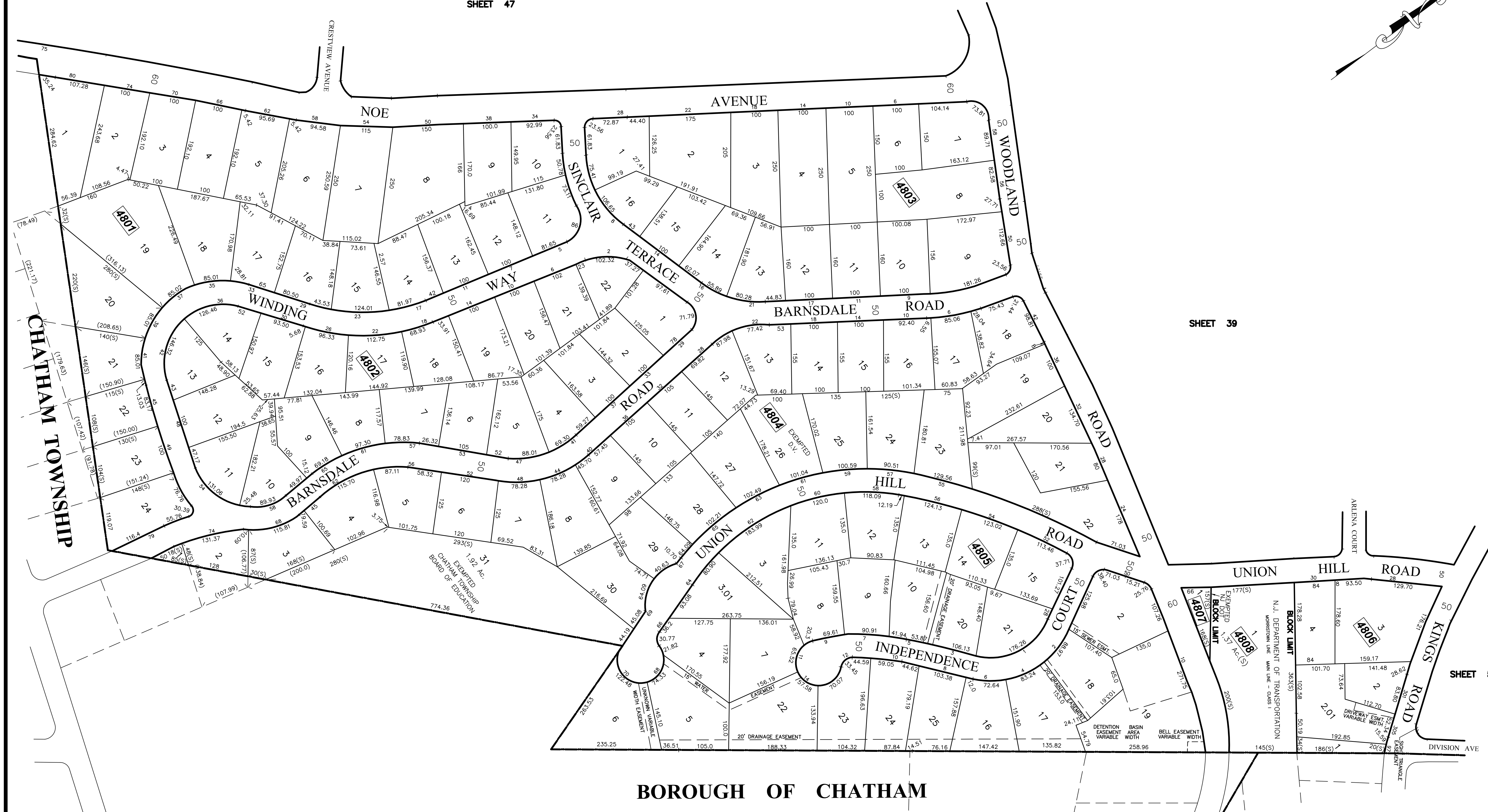
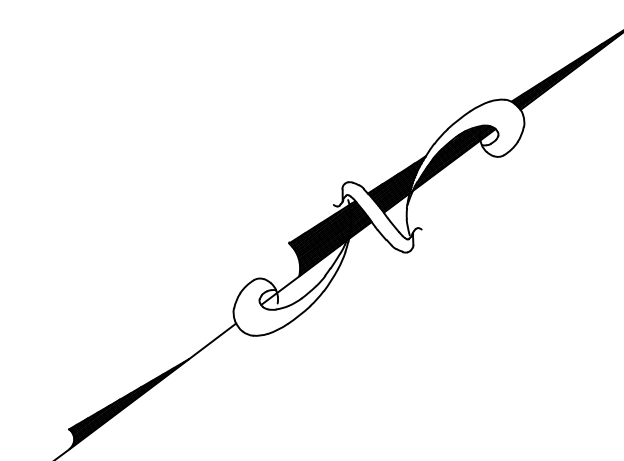


SHEET 47



BOROUGH OF CHATHAM

MAINTENANCE AND SUPERVISION OF TAX MAPS FOR THE BOROUGH PRIOR TO JANUARY 2016 WAS PERFORMED BY RICHARD F. SMITH, P.L.S. BEGINNING IN JANUARY 2016, MAINTENANCE AND SUPERVISION WAS PERFORMED BY ANDREW B. CLARKE, P.L.S., P.E. GB04105600

- NOTES:
- THIS SHEET HAS BEEN DRAWN USING COMPUTER AIDED DRAFTING/DESIGN.
  - THIS SHEET IS A DIGITIZED COPY OF THE TAX MAP PREPARED BY RICHARD F. SMITH, JR. AND DATED 5-2-07. THE APPROVED ORIGINAL IS ON FILE IN THE ENGINEER'S OFFICE.

NO.	REVISION	DATE	BY	APP'D
2.	ANDREW CLARKE, PLS & PE - GENERAL REVIEW	9/27/19	D.C.B.	A.B.C.
1.	ANDREW CLARKE, PLS & PE - GENERAL REVIEW	5/4/18	D.C.B.	A.B.C.

DIVISION OF TAXATION,  
SIGNED BY:  
RICHARD F. SMITH JR.,  
APPROVED BY:  
SUE DAVISON, CTA  
FEBRUARY 13, 2012, SERIAL # 921.

**TAX MAP**  
BOROUGH OF MADISON  
MORRIS COUNTY, NEW JERSEY  
SCALE: 1"=100' DATE: 5-2-07  
RICHARD F. SMITH, JR.  
PROFESSIONAL LAND SURVEYOR NO. 24GS02504800  
28 SCHUYLER PLACE  
MORRISTOWN, NJ 07960