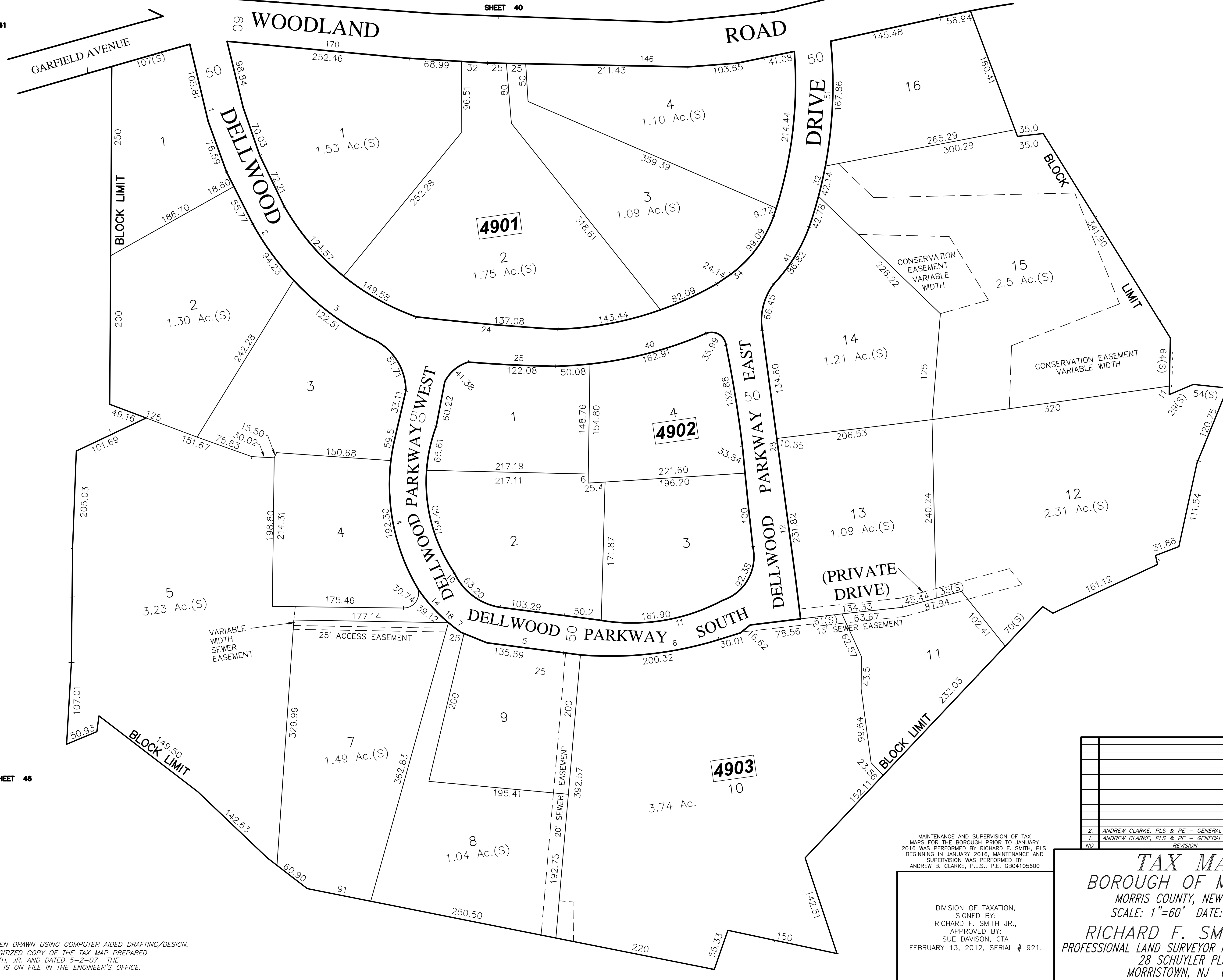


SHEET 41

SHEET 40



SHEET 47

SHEET 46

NOTES:
 1. THIS SHEET HAS BEEN DRAWN USING COMPUTER AIDED DRAFTING/DESIGN.
 2. THIS SHEET IS A DIGITIZED COPY OF THE TAX MAP PREPARED BY RICHARD F. SMITH, JR. AND DATED 5-2-07. THE APPROVED ORIGINAL IS ON FILE IN THE ENGINEER'S OFFICE.

MANTENANCE AND SUPERVISION OF TAX MAPS FOR THE BOROUGH PRIOR TO JANUARY 2016 WAS PERFORMED BY RICHARD F. SMITH, PLS. BEGINNING IN JANUARY 2016, MANTENANCE AND SUPERVISION WAS PERFORMED BY ANDREW B. CLARKE, P.L.S., P.E. GB04105600

DIVISION OF TAXATION,
 SIGNED BY:
 RICHARD F. SMITH JR.,
 APPROVED BY:
 SUE DAVISON, CTA
 FEBRUARY 13, 2012, SERIAL # 921.

NO.	REVISION	DATE	BY	APP'D
2.	ANDREW CLARKE, PLS & PE - GENERAL REVIEW	9/27/19	D.C.B.	A.B.C.
1.	ANDREW CLARKE, PLS & PE - GENERAL REVIEW	5/4/18	D.C.B.	A.B.C.

TAX MAP
 BOROUGH OF MADISON
 MORRIS COUNTY, NEW JERSEY
 SCALE: 1"=60' DATE: 5-2-07
RICHARD F. SMITH, JR.
 PROFESSIONAL LAND SURVEYOR NO. 24GS02504800
 28 SCHUYLER PLACE
 MORRISTOWN, NJ 07960

\storagesrv\Engineering\CAD Files\2015 TAX MAP ANDREW CLARK LS\049.dwg, 049_1/21/2020 10:10:07 AM, buckelewd, DWG To PDF, p.3