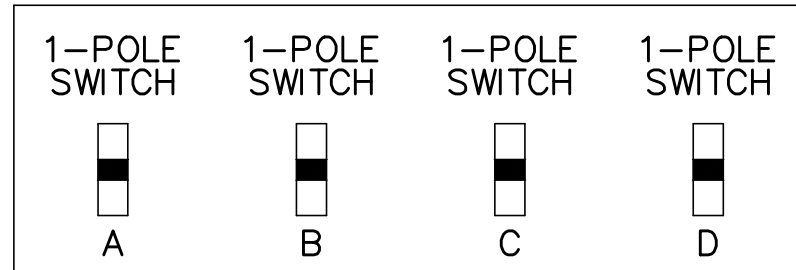


LIGHT FIXTURE SCHEDULE				
TYPE	MANUFACTURER	CATALOG NO.	WATTAGE	REMARKS
F	PARARET LIGHT BAND TO BE SUPPLIED & INSTALLED BY LEXTRON, INC. OR SONSTRUT, INC. COORDINATE LENGTH OF BAND AND ELECTRICAL REQUIREMENTS WITH MANUFACTURER. G.C. TO RUN POWER AND PROVIDE FINAL CONNECTIONS TO LIGHT FIXTURES.			
G	LSI	SFP24-LED-50-UE-DM-40	50 4000 K	2x4 RECESSED LED LIGHT FIXTURE PROVIDE CYP. BD. TRIM AT RESTROOMS
	SECURITY	LJ704-40-MJ2-FS12-EJ-C388	45	
	GREE	CL-E-TR4044-24R-40N	42	
H	LSI	SFP22 LED 30 UE DM 35 FK23	30	2x2 RECESSED LED LIGHT FIXTURE (DINING ROOM DROPPED CEILING ORDER BLACK TRIM WITH BLACK CEILING AND WHITE TRIM WITH HAZ. CEILING.
	ALTERNATE	LED FIXTURE SUPPLIED BY OWNER		
EM	LSI	LPRXRUMWMD11R	(2) 1 LED	EMERGENCY LIGHT PROVIDE SINGLE HEAD IN RESTROOMS POWERED BY REMOTE BATTERY ETL LISTED 30 MIN. RUN TIME
EMW	LSI	LPRXRUMWMD11R	(2) 1.1 LED	WET LOCATIONS - EMERGENCY LIGHT ETL LISTED 30 MIN. RUN TIME
	ALT: APPROVED EQUAL			
X	LSI	EX-8-U-WB-WH-S02-R12	(2) 1.1 LED	EXIT LIGHT REPLACE AS NEEDED
	ALT: APPROVED EQUAL			
L	LSI	WP35LF3X9U57KM5V	12 5700 K	SURFACE MOUNTED EXTERIOR WALL SCONCE NOTE: FIXTURES ARE TO MATCH STOREFRONT FRAMES
	ALTERNATE	LED FIXTURE SUPPLIED BY OWNER		
C4w	L&L	LC06-13-LED-30-48-UE-TR6RL-HAZ-UH	13 3000	DOWNLIGHT
A	NAUTICAL	BK304 & SP305-18-60D-921-03	10 2100	PENDANT LAMP
D6w	L&L	PDL6KAD-LED-01-30-100-PDL6KADU59KC	14 3000	WALL WASHER DOWN LIGHT
B	L&L	LJT-4124R1-SN-LED 'RUBY MATTE'	10 3000	PENDANT LAMP

KEYED NOTES:

1. SWITCH BANK: REFERENCE DETAIL #1, THIS SHEET
2. WIRE WALL PACK THROUGH PHOTO CELL. ELECTRICAL CONTRACTOR TO PROVIDE "PARAGON" PHOTOCELL CW 201-00 MOUNTED ON ROOF FACING NORTH. MAKE ADJUSTMENTS FOR ANY AMBIENT LIGHT.
3. PROVIDE HARDWARE FOR INSTALLATION IN GYPSUM BOARD CEILINGS.
4. ELECTRICAL CONTRACTOR TO COORDINATE WITH THE DRIVE THROUGH SIGN SUPPLIER FOR EXACT ELECTRICAL REQUIREMENTS.
5. ALL LIGHT FIXTURES OVER FOOD SERVICE AREA TO BE PROVIDED WITH LENS.



FLOOR LEVEL

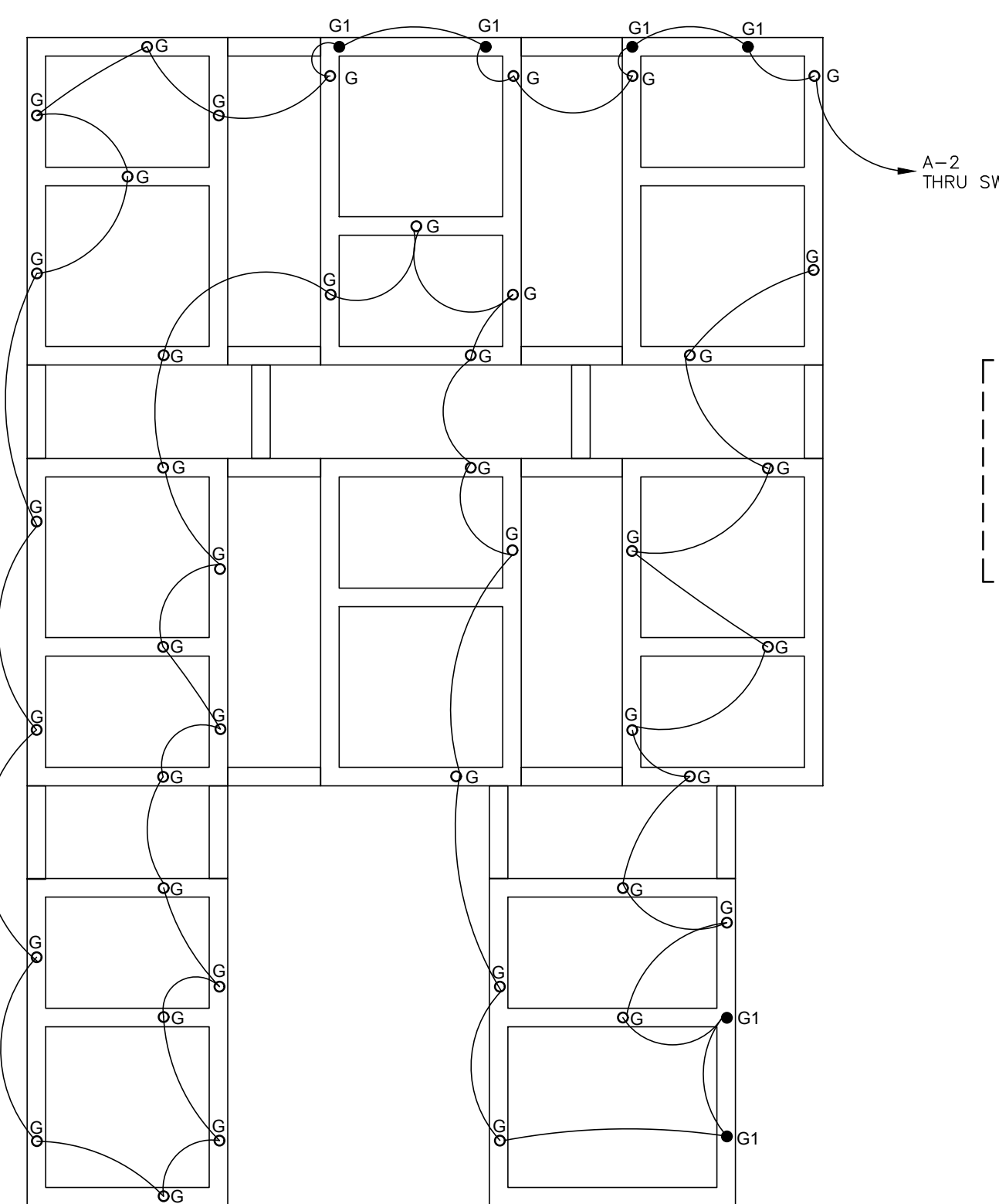
1 SWITCH BANK DETAIL

SCALE: NONE

NOTE: NUMBER OF SWITCHES REQUIRED MAY VARY BASED ON LIGHTING CONFIGURATION - VERIFY REQUIREMENTS.

LIGHTING FIXTURE NOTES

1. ALL LIGHTING FIXTURES SHALL BE 120 VOLT UNLESS NOTED OTHERWISE.
2. ALL ENCLOSED FLUORESCENT LIGHTING FIXTURES SHALL BE PROVIDED WITH BULBS SPECIFIED BY THE MANUFACTURER
3. CONTRACTOR SHALL FURNISH AND INSTALL IN-LINE FUSE HOLDER AND FUSES IN ALL BALLASTED LIGHTING FIXTURES.
4. CONTRACTOR SHALL CHECK AND VERIFY FIXTURE QUANTITY AND MAKE PROPER ADJUSTMENTS FOR ANY CHANGES IN PLAN SHOWN DUE TO ADDITIONAL REQUIREMENTS SUCH AS VESTIBULES, LOCAL CODES, ETC.
5. SEE SITE LIGHTING DRAWING FOR AREA LIGHTING POLES SPECIFICATIONS AND DETAILS.
6. BALLASTS FOR FLUORESCENT FIXTURES SHALL BE TYPE 'P' WITH MINIMUM POWER FACTOR OF 90%. BALLASTS FOR SOFFIT LIGHTING SHALL BE RATED 50% FOR ZONE 'E', 0% FOR ZONES 'B', 'C', AND 'D', AND -20% FOR ZONE 'A'. ZONE 'A' LAMPS TO BE H/O.
7. WHENEVER APPLICABLE, THE INCANDESCENT LIGHTING FIXTURES SHALL BE FURNISHED WITH ENERGY EFFICIENT INCANDESCENT LAMPS.

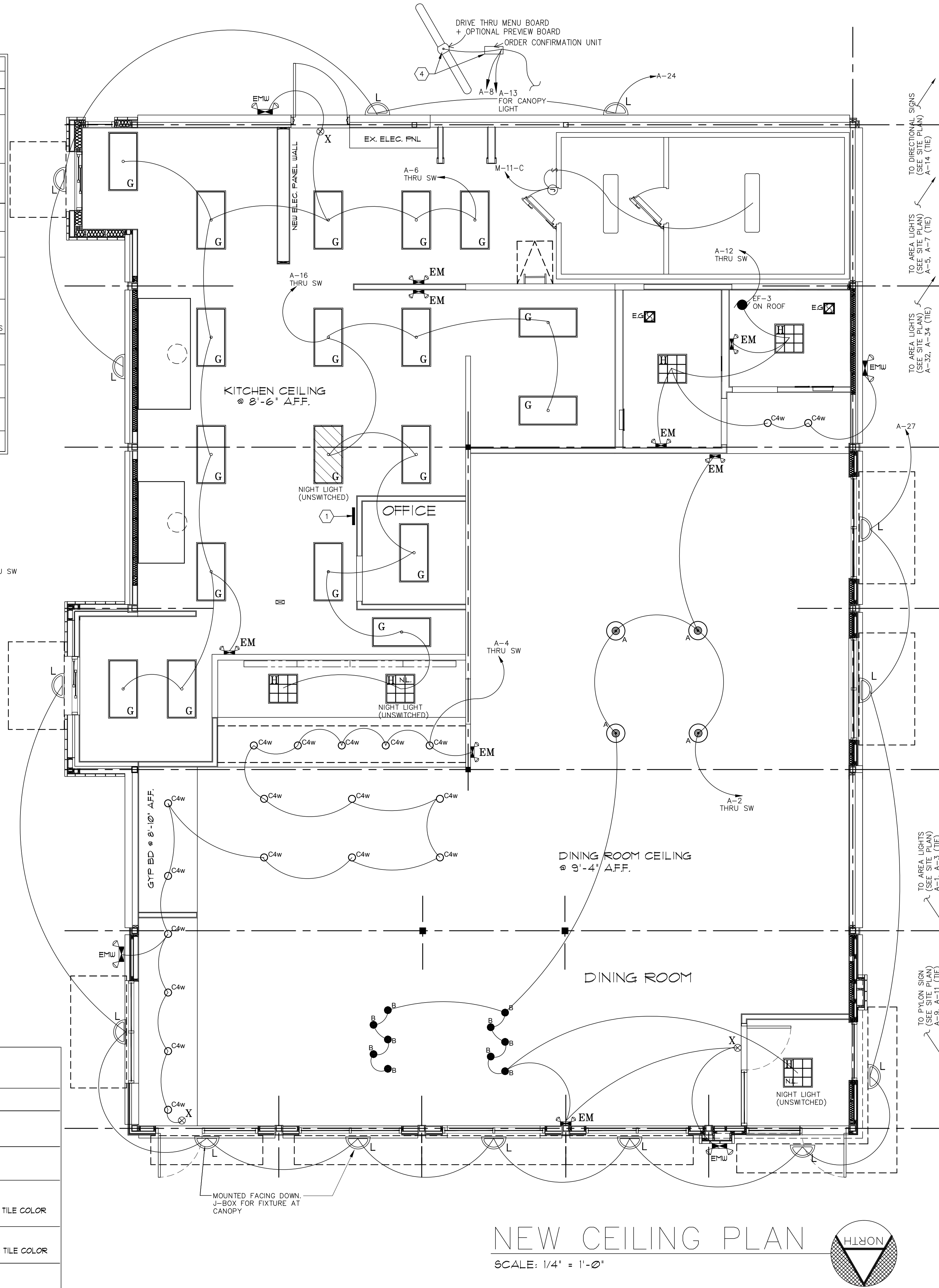


PROPOSED TRELLIS LAYOUT

NOT TO SCALE
SEE DECOR DUG'S FOR FINAL LAYOUT & LOCATION

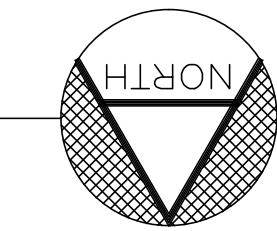
LEGEND		
SYMBOL	DESCRIPTION	NOTES
	EMERGENCY LIGHTS	
	EXIT SIGN	WALL MOUNTED CEILING MOUNTED
	RETURN AIR GRILLE	REPLACE WITH EGER PRODUCTS PLASTIC - MATCH CEILING TILE COLOR
	SUPPLY AIR GRILLE	REPLACE WITH EGER PRODUCTS PLASTIC - MATCH CEILING TILE COLOR

NOTE:
1. ALL ITEMS SHALL BE FURNISHED AND INSTALLED GEN. CONTR.



NEW CEILING PLAN

SCALE: 1/4" = 1'-0"



CLS# 1032 BK# 1366

No.	Description	Date
-	REISSUED FOR PLANNING REVIEW	06.18.20
-	ISSUED FOR PLANNING REVIEW	04.21.20
3	PER OWNER COMMENTS	03.24.20
2	PER OWNER COMMENTS	03.16.20
1	PER OWNER COMMENTS	03.04.20

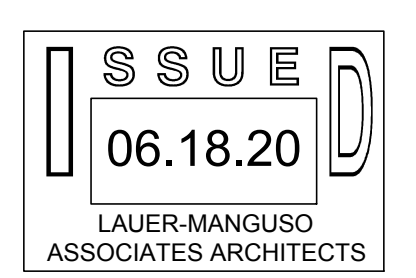
REVISIONS

BURGER KING
317 MAIN STREET
MADISON, NJ 07940

CARROLLS, LLC
SYRACUSE, NEW YORK

ELECTRICAL LIGHTING PLAN

PROFESSIONAL CERTIFICATION.
I certify that these documents were prepared or approved by me, and that I am a duly licensed architect under the laws of the State of New Jersey, license number 18548.



LAUER-MANGUSO & ASSOCIATES ARCHITECTS
4080 Ridge Lea Road
Buffalo, N.Y. 14228
(716) 837 - 0833

Date: 03.04.2020 Drawing No. E-1
Drawn By: CJP
Checked By: JWM
Job Number: 19045